



GENEMEDI
Innovative Solution
for Therapeutics & Diagnostics Industry



Biologics Solution Product Catalogue 2025 for Therapeutic antibody (TAb)

Solution for Therapeutic Antibody & ADC Development

- Anti-ADC Payload Antibodies:
Anti-MMAE/MMAF, Anti-Dxd/Exatecan, Anti-DM1/DM4,
Anti-Exatecan, Anti-Budesonide, Anti-Duocarmycin,
Anti-CPT, Anti-Eribulin, Anti-SN-38

In-vivo Grade antibodies

- INN-index Mab, Bispecific, ADC
- Nanobody, Neutralizing Antibody

Platform & Service

- Taurus™ Platform for difficult targets antibody discovery
- LIBRA™ AI-based engineering platform for antibody humanization and rational evolution

About GeneMedi

GeneMedi specializes in creating superior antibody, protein, and vector-based bioproducts, revolutionizing diagnostics and biologics solutions.



At GeneMedi, innovation, product integrity, and scalable solutions form the cornerstone of our mission to advance the field of diagnostics and biologics. Our portfolio of antibodies, proteins, and vector-derived products is built on a foundation of unparalleled expertise in the following areas:

Innovative Antigen Design and Robust Assay Development

Our strategic focus on biomarkers and target analysis enables the creation of highly specific antigens and the development of robust assays, ensuring our products achieve superior performance in clinical and research settings.



Streamlined Molecular Discovery with Emphasis on Stability

Rapid Protein & Antibody Identification: Our proprietary platforms, **TAURUS™** for accelerated antibody discovery and **LIBRA™** for AI-driven protein evolution, are designed to identify and optimize molecules with optimal stability and functionality.

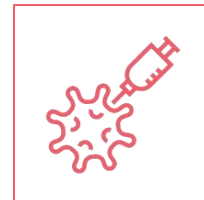
Cutting-Edge AAV & GCT Discoveries: The **G-NEXT™** platform is our answer to the industry's need for innovative AAV vectors, offering improved stability, efficiency, and safety for groundbreaking gene therapy approaches.



Scalable Production and Uncompromising Quality

High-Volume Protein & Antibody Manufacturing: Our facilities are equipped to handle large-scale production of up to 1000L per batch, ensuring high levels of purity and stability through stringent quality controls.

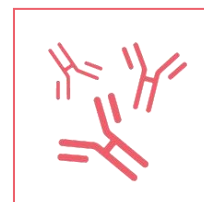
Advanced Vector Manufacturing Capabilities: In GeneMedi Vector Core (**GVC**), with a focus on AAV, Lentivirus, and VLP production up to 200L per batch, we employ sophisticated purification techniques to guarantee vector efficacy and integrity.



Comprehensive Solutions for Diverse Application Needs

Diagnostics: Our diagnostic solutions leverage **CLIA**, **LFA**, **ELISA** and **unique POCT** platforms for comprehensive assay validation and clinical sample consistency, setting new standards in diagnostic accuracy.

Biologics: We specialize in the development of industrial solutions in up/downstream for therapeutic antibodies, AAV gene therapy, and Cell therapy technologies, ensuring our products and solutions can improve specificity, potency, and safety in the therapeutic industry.



GeneMedi (GM) is dedicated to delivering innovative and scalable biotechnological solutions, driving forward the fields of diagnostics and therapeutics with confidence and expertise. Contact with GM to reach your reliable industrial partner.

Table Of Contents

Part 1 Solution for Therapeutic Protein & Antibody & ADC Development

Anti-ADC Payload antibody: anti-MMAE/MMAF, anti-Dxd/Exatecan, anti-DM1/DM4 Hot

Target: Protein/VLP/Assay Cellline/Expression vector

In-vivo Grade Benchmark: INN Mab, Bispecific, ADC, Nanobody, Neutralizing Antibody

Part 2 Platform & Service

Taurus™ Platform for difficult targets antibody discovery

LIBRA™ Antibody engineering platform for antibody humanization, maturation and rational evolution

Part 1 Solution for Therapeutic Protein & Antibody & ADC Development

Anti-ADC Payload antibody

Product list

| Cat.No | Products Name | Products Name | Fc |
|---|--------------------|---|---------|
| GTU-Bios-Maytansinoids-Ab | DM1/DM4 | Anti-DM1/DM4 monoclonal antibody(mAb) | hFc/mFc |
| GTU-Bios-Auristatin-Ab-01 | MMAE/MMAF | Anti-MMAE/MMAF monoclonal antibody(mAb) | hFc/mFc |
| GTU-Bios-Auristatin-Ab-02 | MMAE (Specific) | Anti-MMAE (Specific) monoclonal antibody(mAb) | hFc/mFc |
| GTU-Bios-DXd-Ab | DXd/Exatecan | Anti-DXd&Exatecan monoclonal antibody(mAb) | hFc/mFc |
| GTU-Bios-CPT-Ab | Camptothecin (CPT) | Anti-CPT monoclonal antibody(mAb) | hFc/mFc |
| GTU-Bios-Eribulin-Ab | Eribulin | Anti-Eribulin monoclonal antibody(mAb) | hFc/mFc |
| GTU-Bios-Exatecan-Ab | Exatecan | Anti-Exatecan monoclonal antibody(mAb) | hFc/mFc |
| GTU-Bios-SN-38-Ab | SN-38 | Anti-SN-38 monoclonal antibody(mAb) | hFc/mFc |
| GTU-Bios-Budesonide-Ab | Budesonide | Anti-Budesonide monoclonal antibody (mAb) | hFc/mFc |
| GTU-Bios-MTX-Ab | MTX | Anti-MTX monoclonal antibody(mAb) | hFc/mFc |
| GTU-Bios-PBD-Ab | PBD | Anti-PBD monoclonal antibody(mAb) | hFc/mFc |
| GTU-Bios-PNU-159682-Ab | PNU-159682 | Anti-PNU-159682 monoclonal antibody(mAb) | hFc/mFc |
| GTU-Bios-Amanitin-Ab | Amanitin | Anti-Amanitin monoclonal antibody(mAb) | hFc/mFc |
| GTU-Bios-Calicheamicin-Ab | Calicheamicin | Anti-Calicheamicin monoclonal antibody(mAb) | hFc/mFc |
| GTU-Bios-Doxorubicin-Ab | Doxorubicin | Anti-Doxorubicin monoclonal antibody (mAb) | hFc/mFc |
| GTU-Bios-Duocarmycin-Ab | Duocarmycin | Anti-Duocarmycin monoclonal antibody (mAb) | hFc/mFc |

Anti-ADC Payload antibody

Validation

GTU-Bios-DXd-Ab

GeneMedi's GTU-Bios-DXd-Ab demonstrates robust binding affinity with ADCs incorporating DXd payload, highlighting its versatility. Furthermore, neither GTU-Bios-DXd-Ab shows binding with ADCs conjugated with SN38, emphasizing GeneMedi's commitment to producing highly selective antibodies tailored for optimized therapeutic outcomes.

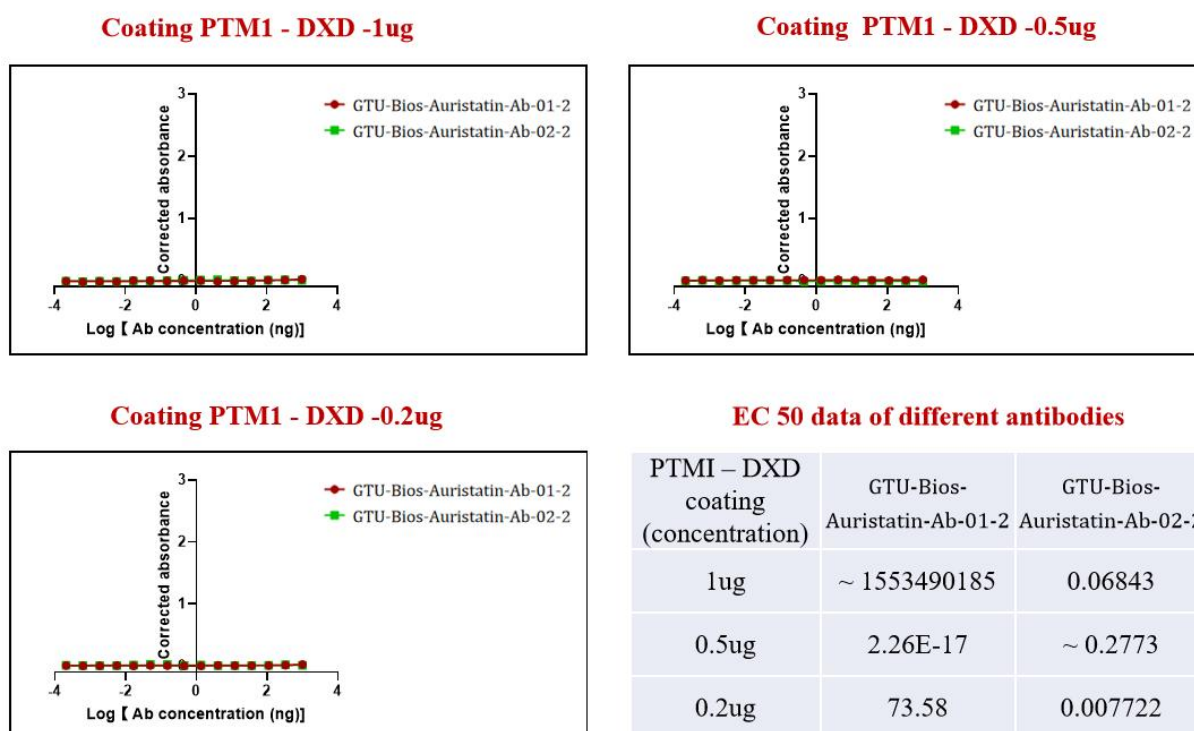


Figure 1. *GTU-Bios-Auristatin-Ab-01-2* and *GTU-Bios-Auristatin-Ab-02-2* have not been bound with the ADC conjugated with DXD.

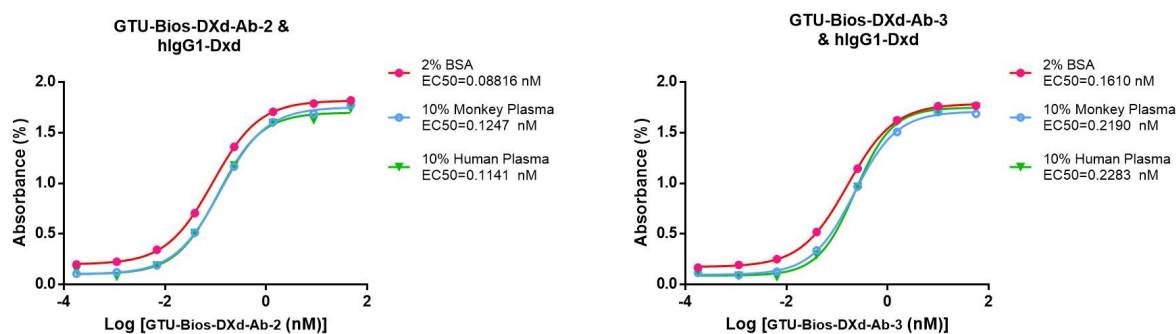


Figure 2. *GTU-Bios-DXd-Ab* has minimal impact on pharmacokinetic (PK) studies involving humans and monkeys.

Anti-ADC Payload antibody

Validation

GTU-Bios-Auristatin-Ab (MMAE&MMAF)

GeneMedi's GTU-Bios-Auristatin-Ab-01-2 demonstrates robust binding affinity with ADCs incorporating either MMAE or MMAF payloads, highlighting its versatility in targeted drug delivery. In contrast, GTU-Bios-Auristatin-Ab-02-2 exhibits exclusive specificity for MMAE-based ADCs, ensuring precise targeting with minimal off-target effects. Furthermore, neither antibody shows binding with ADCs conjugated with DXD, emphasizing GeneMedi's commitment to producing highly selective antibodies tailored for optimized therapeutic outcomes.

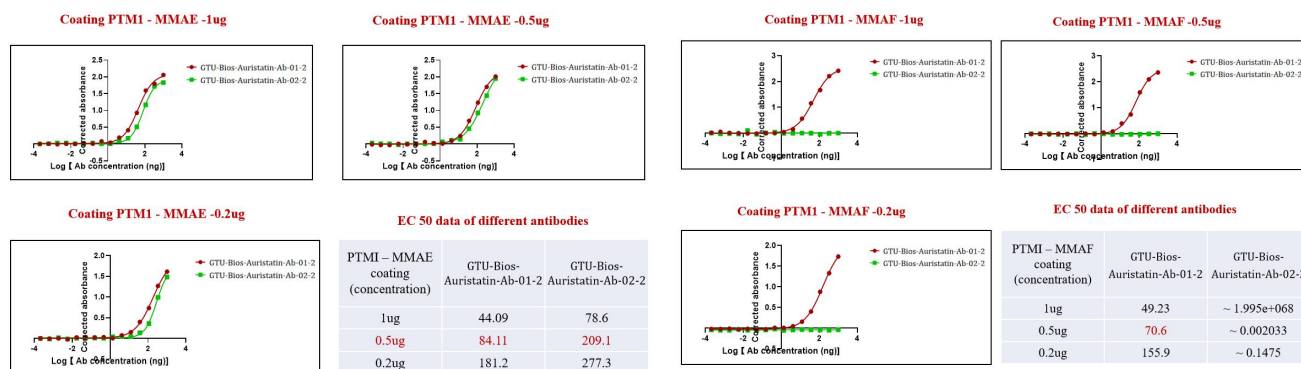
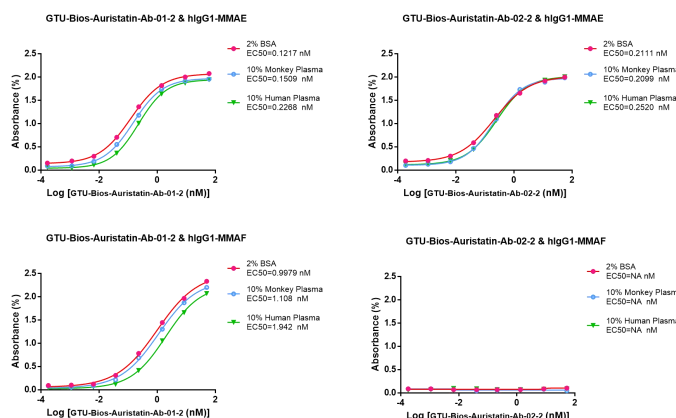


Figure 1. **GTU-Bios-Auristatin-Ab-01-2** and **GTU-Bios-Auristatin-Ab-02-2** have been actively bound with the ADC (PTM-1 MMAE).

Figure 2. **GTU-Bios-Auristatin-Ab-01-2** has been actively bound with the ADC (PTM-1 MMAF). While **GTU-Bios-Auristatin-Ab-02-2** has not been bound with the ADC with MMAF.



GTU-Bios-Auristatin-Ab-01-2 and **GTU-Bios-Auristatin-Ab-02-2** can be used in pharmacokinetic (PK) studies involving humans and monkeys

Anti-ADC Payload antibody

Validation

GTU-Bios-Exatecan-Ab

GeneMedi's GTU-Bios-Exatecan-Ab demonstrates specific binding affinity for Exatecan ADCs, highlighting its functional efficacy. Furthermore, its lack of binding to SN38-conjugated ADCs emphasizes GeneMedi's dedication to developing highly selective antibody solutions.

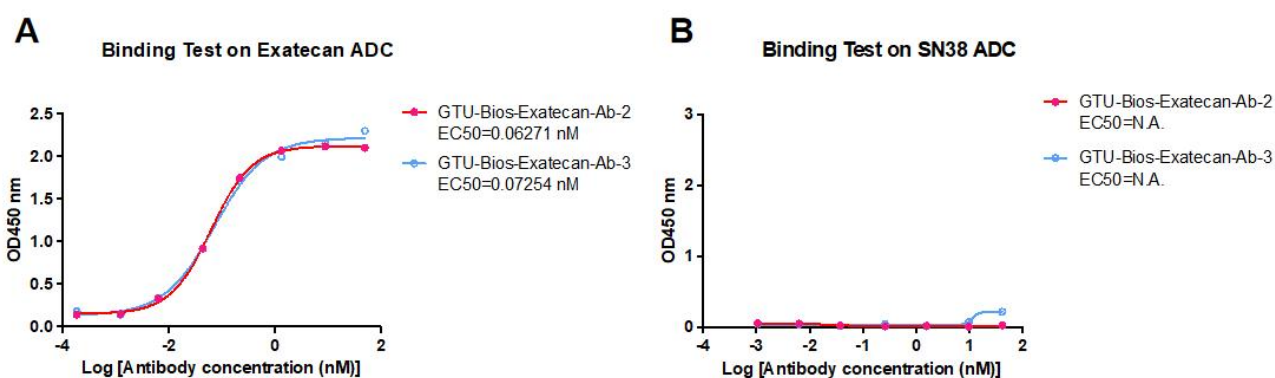


Figure 1. GeneMedi's GTU-Bios-Exatecan-Ab: Specific Binding with Exatecan, Not Binding with SN38.

- Exatecan ADC binding activity assay results show that the EC50 of GTU-Bios-Exatecan-Ab-2 is 0.06271 nM, while the EC50 of GTU-Bios-Exatecan-Ab-3 is 0.07254 nM, indicating strong binding affinity for Exatecan ADC.
- Both GTU-Bios-Exatecan-Ab-2 and GTU-Bios-Exatecan-Ab-3 are not available (N.A.) in the SN38 ADC binding assay.

In-vivo Grade Benchmark: INN Mab, Bispecific, ADC, Nanobody, Neutralizing Antibody

The INN named antibodies & Fusion Protein are biosimilars expressed by mammalian cell line as a benchmark reference therapeutic antibody or Fusion Protein for cell culture, in vitro/in vivo assay development, animal model development, PK/PD model development (Pharmacokinetics & Pharmacodynamic).

Target (Click the target name to check detailed products)

| | | |
|----------------------|---------------------|---------------|
| PDCD1/PD-1 | APP | MUC1 |
| EGFR | CD3E | PCSK9 |
| MS4A1/CD20 | IL17A/IL17 | VEGFA |
| CD22 | IL2RA | TNF |
| CD40 | IGF1R | CD19 |
| CEACAM5/CD66e | CTLA4/CTLA-4 | C5/CO5 |
| ERBB2/HER2 | EPCAM | |
| CD274/PD-L1 | | |

For other targets, please click this link to check:
<https://www.genemedi.net/i/biologics-biosimilar>

GeneMedi's Biologic related products & protocol:

- [Virus-like particles \(VLP\) Platforms for immunogens, vaccines and drug carriers](#)
- [Antibody-drug Conjugate \(ADC\): Pre-made ADC benchmark, MOA, Production and QC](#)
- [Bispecific antibodies: formats, applications and products](#)
- [Neutralizing antibodies of virus \(SARS2, HIV, HBV, Rabies, RSV, Ebola, Influenza\)](#)

PDCD1/PD-1

| Cat No. | Products Name (INN Index) | INN Name | Target |
|-----------------|--|--------------|-------------------------|
| GMP-Bios-ab-044 | <u>Pre-Made Balstilimab biosimilar, Whole mAb, Anti-PDCD1/PD-1 Antibody:</u> <u>Anti-CD279/PD1/SLEB2/hSLE1 therapeutic antibody</u> | Balstilimab | PDCD1/PD-1 |
| GMP-Bios-ab-085 | <u>Pre-Made Budigalimab biosimilar, Whole mAb, Anti-PDCD1/PD-1 Antibody:</u> <u>Anti-CD279/PD1/SLEB2/hSLE1 therapeutic antibody</u> | Budigalimab | PDCD1/PD-1 |
| GMP-Bios-ab-088 | <u>Pre-Made Cadonilimab biosimilar, Bispecific Mixed mAb and scFv, Anti-PDCD1/PD-1;CTLA4/CTLA-4 antibody:</u> <u>Anti-CD279/PD1/SLEB2/hPD-1/hPD-1/hSLE1;CD/GSE/GRD4/ALPS5/CD152/IDDM12/CELIAC3 therapeutic antibody</u> | Cadonilimab | PDCD1/PD-1;CTLA4/CTLA-4 |
| GMP-Bios-ab-090 | <u>Pre-Made Camrelizumab biosimilar, Whole mAb, Anti-PDCD1/PD-1 Antibody:</u> <u>Anti-CD279/PD1/SLEB2/hSLE1 therapeutic antibody</u> | Camrelizumab | PDCD1/PD-1 |
| GMP-Bios-ab-097 | <u>Pre-Made Cemiplimab biosimilar, Whole mAb, Anti-PDCD1/PD-1 Antibody:</u> <u>Anti-CD279/PD1/SLEB2/hSLE1 therapeutic antibody</u> | Cemiplimab | PDCD1/PD-1 |
| GMP-Bios-ab-101 | <u>Pre-Made Cetrelimab biosimilar, Whole mAb, Anti-PDCD1/PD-1 Antibody:</u> <u>Anti-CD279/PD1/SLEB2/hSLE1 therapeutic antibody</u> | Cetrelimab | PDCD1/PD-1 |
| GMP-Bios-ab-154 | <u>Pre-Made Dostarlimab biosimilar, Whole mAb, Anti-PDCD1/PD-1 Antibody:</u> <u>Anti-CD279/PD1/SLEB2/hSLE1 therapeutic antibody</u> | Dostarlimab | PDCD1/PD-1 |
| GMP-Bios-ab-203 | <u>Pre-Made Ezabenlimab biosimilar, Whole mAb, Anti-PDCD1/PD-1 Antibody:</u> <u>Anti-CD279/PD1/SLEB2/hSLE1 therapeutic antibody</u> | Ezabenlimab | PDCD1/PD-1 |
| GMP-Bios-ab-215 | <u>Pre-Made Finotonlimab biosimilar, Whole mAb, Anti-PDCD1/PD-1 Antibody:</u> <u>Anti-CD279/PD1/SLEB2/hSLE1 therapeutic antibody</u> | Finotonlimab | PDCD1/PD-1 |

PDCD1/PD-1

| Cat No. | Products Name (INN Index) | INN Name | Target |
|-----------------|--|---------------|-----------------|
| GMP-Bios-ab-240 | <u>Pre-Made Geptanolimab biosimilar, Whole mAb, Anti-PDCD1/PD-1 Antibody:</u> <u>Anti-CD279/PD1/SLEB2/hSLE1 therapeutic antibody</u> | Geptanolimab | PDCD1/PD-1 |
| GMP-Bios-ab-287 | <u>Pre-Made Izuralimab biosimilar, Bispecific Mixed mAb and scFv, Anti-ICOS;PDCD1/PD-1 antibody:</u> <u>Anti-AILIM/CD278/CVID1;CD279/SLEB2/hPD-1/hPD-1/hSLE1 therapeutic antibody</u> | Izuralimab | ICOS;PDCD1/PD-1 |
| GMP-Bios-ab-292 | <u>Pre-Made Lambrolizumab biosimilar, Whole mAb, Anti-PDCD1/PD-1 Antibody:</u> <u>Anti-CD279/PD1/SLEB2/hSLE1 therapeutic antibody</u> | Lambrolizumab | PDCD1/PD-1 |
| GMP-Bios-ab-381 | <u>Pre-Made Nivolumab biosimilar, Whole mAb, Anti-PDCD1/PD-1 Antibody:</u> <u>Anti-CD279/PD1/SLEB2/hSLE1 therapeutic antibody</u> | Nivolumab | PDCD1/PD-1 |
| GMP-Bios-ab-435 | <u>Pre-Made Pembrolizumab biosimilar, Whole mAb, Anti-PDCD1/PD-1 Antibody:</u> <u>Anti-CD279/PD1/SLEB2/hSLE1 therapeutic antibody</u> | Pembrolizumab | PDCD1/PD-1 |
| GMP-Bios-ab-436 | <u>Pre-Made Penpulimab biosimilar, Whole mAb, Anti-PDCD1/PD-1 Antibody:</u> <u>Anti-CD279/PD1/SLEB2/hSLE1 therapeutic antibody</u> | Penpulimab | PDCD1/PD-1 |
| GMP-Bios-ab-441 | <u>Pre-Made Pidilizumab biosimilar, Whole mAb, Anti-PDCD1/PD-1 Antibody:</u> <u>Anti-CD279/PD1/SLEB2/hSLE1 therapeutic antibody</u> | Pidilizumab | PDCD1/PD-1 |
| GMP-Bios-ab-442 | <u>Pre-Made Pimivalimab biosimilar, Whole mAb, Anti-PDCD1/PD-1 Antibody:</u> <u>Anti-CD279/PD1/SLEB2/hSLE1 therapeutic antibody</u> | Pimivalimab | PDCD1/PD-1 |
| GMP-Bios-ab-458 | <u>Pre-Made Prolgolimab biosimilar, Whole mAb, Anti-PDCD1/PD-1 Antibody:</u> <u>Anti-CD279/PD1/SLEB2/hSLE1 therapeutic antibody</u> | Prolgolimab | PDCD1/PD-1 |

PDCD1/PD-1

| Cat No. | Products Name (INN Index) | INN Name | Target |
|-----------------|--|---------------|---------------------|
| GMP-Bios-ab-459 | <u>Pre-Made Pucotenlimab biosimilar, Whole mAb, Anti-PDCD1/PD-1 Antibody:</u> <u>Anti-CD279/PD1/SLEB2/hSLE1 therapeutic antibody</u> | Pucotenlimab | PDCD1/PD-1 |
| GMP-Bios-ab-480 | <u>Pre-Made Retifanimab biosimilar, Whole mAb, Anti-PDCD1/PD-1 Antibody:</u> <u>Anti-CD279/PD1/SLEB2/hSLE1 therapeutic antibody</u> | Retifanimab | PDCD1/PD-1 |
| GMP-Bios-ab-508 | <u>Pre-Made Sasanlimab biosimilar, Whole mAb, Anti-PDCD1/PD-1 Antibody:</u> <u>Anti-CD279/PD1/SLEB2/hSLE1 therapeutic antibody</u> | Sasanlimab | PDCD1/PD-1 |
| GMP-Bios-ab-515 | <u>Pre-Made Serplulimab biosimilar, Whole mAb, Anti-PDCD1/PD-1 Antibody:</u> <u>Anti-CD279/PD1/SLEB2/hSLE1 therapeutic antibody</u> | Serplulimab | PDCD1/PD-1 |
| GMP-Bios-ab-523 | <u>Pre-Made Sintilimab biosimilar, Whole mAb, Anti-PDCD1/PD-1 Antibody:</u> <u>Anti-CD279/PD1/SLEB2/hSLE1 therapeutic antibody</u> | Sintilimab | PDCD1/PD-1 |
| GMP-Bios-ab-531 | <u>Pre-Made Spartalizumab biosimilar, Whole mAb, Anti-PDCD1/PD-1 Antibody:</u> <u>Anti-CD279/PD1/SLEB2/hSLE1 therapeutic antibody</u> | Spartalizumab | PDCD1/PD-1 |
| GMP-Bios-ab-556 | <u>Pre-Made Tebotelimab biosimilar, Bispecific scFv with Crossover, Anti-PDCD1/PD-1;LAG3 Antibody:</u> <u>Anti-CD279/PD1/SLEB2/hPD-1/hPD-l/hSLE1;CD223 therapeutic antibody</u> | Tebotelimab | PDCD1/PD-1; LAG3 |
| GMP-Bios-ab-581 | <u>Pre-Made Tislelizumab biosimilar, Whole mAb, Anti-PDCD1/PD-1 Antibody:</u> <u>Anti-CD279/PD1/SLEB2/hSLE1 therapeutic antibody</u> | Tislelizumab | PDCD1/PD-1 |
| GMP-Bios-ab-587 | <u>Pre-Made Toripalimab biosimilar, Whole mAb, Anti-PDCD1/PD-1 Antibody:</u> <u>Anti-CD279/PD1/SLEB2/hSLE1 therapeutic antibody</u> | Toripalimab | PDCD1/PD-1 |

PDCD1/PD-1

| Cat No. | Products Name (INN Index) | INN Name | Target |
|-------------------|---|--------------|--------------------------|
| GMP-Bios-ab-631 | <u>Pre-Made Vudalimab biosimilar, Bispecific Mixed mAb and scFv, Anti-CTLA4/CTLA-4;PDCD1/PD-1 Antibody: Anti-CD/GSE/GRD4/ALPS5/CD152/IDDM12/CELIAC3; CD279/SLEB2/hPD-1/hPD-1/hSLE1 therapeutic antibody</u> | Vudalimab | CTLA4/CTLA-4 ;PDCD1/PD-1 |
| GMP-Bios-ab-644 | <u>Pre-Made Zeluvalimab biosimilar, Whole mAb, Anti-PDCD1/PD-1 Antibody: Anti-CD279/PD1/SLEB2/hSLE1 therapeutic antibody</u> | Zeluvalimab | PDCD1/PD-1 |
| GMP-Bios-ab-648 | <u>Pre-Made Zimberelimab biosimilar, Whole mAb, Anti-PDCD1/PD-1 Antibody: Anti-CD279/PD1/SLEB2/hSLE1 therapeutic antibody</u> | Zimberelimab | PDCD1/PD-1 |
| GMP-Bios-ab-667 | <u>Pre-Made Fidasimtamab biosimilar, Whole mAb, Anti-PDCD1/PD-1;ERBB2/HER2 Antibody: Anti-CD279/PD1/SLEB2/hSLE1;CD340/neu/MLN 19/NEU/NGL/TKR1/VSCN2 therapeutic antibody</u> | Fidasimtamab | PDCD1/PD-1; ERBB2/HER2 |
| GMP-Bios-ab-672 | <u>Pre-Made Iparomlimab biosimilar, Whole mAb, Anti-PDCD1/PD-1 Antibody: Anti-CD279/PD1/SLEB2/hSLE1 therapeutic antibody</u> | Iparomlimab | PDCD1/PD-1 |
| GMP-Bios-ab-679 | <u>Pre-Made Lorigerlimab biosimilar, Whole mAb, Anti-PDCD1/PD-1;CTLA4/CTLA-4 Antibody: Anti-CD279/PD1/SLEB2/hPD-1/hPD-1/hSLE1;CD/GSE/GRD4/ALPS 5/CD152/IDDM12/CELIAC3 therapeutic antibody</u> | Lorigerlimab | PDCD1/PD-1; CTLA4/CTLA-4 |
| GMP-Bios-ab-684 | <u>Pre-Made Nofazinlimab biosimilar, Whole mAb, Anti-PDCD1/PD-1 Antibody: Anti-CD279/PD1/SLEB2/hSLE1 therapeutic antibody</u> | Nofazinlimab | PDCD1/PD-1 |
| GMP-Bios-ab-692 | <u>Pre-Made Rulonilimab biosimilar, Whole mAb, Anti-PDCD1/PD-1 Antibody: Anti-CD279/PD1/SLEB2/hSLE1 therapeutic antibody</u> | Rulonilimab | PDCD1/PD-1 |
| GMP-Bios-INN-1058 | <u>Pre-Made Zimbirelimab Biosimilar, Whole Mab, Anti-PDCD1/PD-1 Antibody: Anti-CD279/PD1/SLEB2/hSLE1 therapeutic antibody</u> | Zimbirelimab | PDCD1/PD-1 |

EGFR

| Cat No. | Products Name (INN Index) | INN Name | Target |
|-----------------|--|---------------|-----------|
| GMP-Bios-ab-021 | <u>Pre-Made Amivantamab biosimilar, Bispecific mAb, Anti-EGFR;MET Antibody: Anti-ERBB/ERRP/HER1/mENA/ERBB1/PIG61/NISBD2;AUTS9/DFNB97/HGFR/RCCP2/c-Met therapeutic antibody</u> | Amivantamab | EGFR;MET |
| GMP-Bios-ab-102 | <u>Pre-Made Cetuximab biosimilar, Whole mAb, Anti-EGFR Antibody: Anti-ERBB/ERRP/HER1/mENA/ERBB1/PIG61/NISBD2 therapeutic antibody</u> | Cetuximab | EGFR |
| GMP-Bios-ab-138 | <u>Pre-Made Demupitamab biosimilar, Whole mAb, Anti-EGFR Antibody: Anti-ERBB/ERRP/HER1/mENA/ERBB1/PIG61/NISBD2 therapeutic antibody</u> | Demupitamab | EGFR |
| GMP-Bios-ab-141 | <u>Pre-Made Depatuxizumab biosimilar, Whole mAb ADC, Anti-EGFR Antibody: Anti-ERBB/ERRP/HER1/mENA/ERBB1/PIG61/NISBD2 therapeutic antibody</u> | Depatuxizumab | EGFR |
| GMP-Bios-ab-197 | <u>Pre-Made Etevitamab biosimilar, Bispecific scFv, Anti-EGFR;CD3E Antibody: Anti-ERBB/ERRP/HER1/mENA/ERBB1/PIG61/NISBD2;T3E/TCRE/IMD18 therapeutic antibody</u> | Etevitamab | EGFR;CD3E |
| GMP-Bios-ab-227 | <u>Pre-Made Futuximab biosimilar, Whole mAb, Anti-EGFR Antibody: Anti-ERBB/ERRP/HER1/mENA/ERBB1/PIG61/NISBD2 therapeutic antibody</u> | Futuximab | EGFR |
| GMP-Bios-ab-268 | <u>Pre-Made Imgatuzumab biosimilar, Whole mAb, Anti-EGFR Antibody: Anti-ERBB/ERRP/HER1/mENA/ERBB1/PIG61/NISBD2 therapeutic antibody</u> | Imgatuzumab | EGFR |
| GMP-Bios-ab-296 | <u>Pre-Made Laprituximab biosimilar, Whole mAb ADC, Anti-EGFR Antibody: Anti-ERBB/ERRP/HER1/mENA/ERBB1/PIG61/NISBD2 therapeutic antibody</u> | Laprituximab | EGFR |
| GMP-Bios-ab-324 | <u>Pre-Made Losatuxizumab biosimilar, Whole mAb ADC, Anti-EGFR Antibody: Anti-ERBB/ERRP/HER1/mENA/ERBB1/PIG61/NISBD2 therapeutic antibody</u> | Losatuxizumab | EGFR |

EGFR

| Cat No. | Products Name (INN Index) | INN Name | Target |
|-----------------|--|---------------|-----------|
| GMP-Bios-ab-337 | Pre-Made Matuzumab biosimilar, Whole mAb, Anti-EGFR Antibody: Anti-ERBB/ERRP/HER1/mENA/ERBB1/PIG61/NISBD2 therapeutic antibody | Matuzumab | EGFR |
| GMP-Bios-ab-353 | Pre-Made Modotuximab biosimilar, Whole mAb, Anti-EGFR Antibody: Anti-ERBB/ERRP/HER1/mENA/ERBB1/PIG61/NISBD2 therapeutic antibody | Modotuximab | EGFR |
| GMP-Bios-ab-371 | Pre-Made Necitumumab biosimilar, Whole mAb, Anti-EGFR Antibody: Anti-ERBB/ERRP/HER1/mENA/ERBB1/PIG61/NISBD2 therapeutic antibody | Necitumumab | EGFR |
| GMP-Bios-ab-377 | Pre-Made Nimotuzumab biosimilar, Whole mAb, Anti-EGFR Antibody: Anti-ERBB/ERRP/HER1/mENA/ERBB1/PIG61/NISBD2 therapeutic antibody | Nimotuzumab | EGFR |
| GMP-Bios-ab-425 | Pre-Made Panitumumab biosimilar, Whole mAb, Anti-EGFR Antibody: Anti-ERBB/ERRP/HER1/mENA/ERBB1/PIG61/NISBD2 therapeutic antibody | Panitumumab | EGFR |
| GMP-Bios-ab-440 | Pre-Made Petosemtamab biosimilar, Bispecific mAb, Anti-EGFR;LGR5 Antibody: Anti-ERBB/ERRP/HER1/mENA/ERBB1/PIG61/NISBD2:FEX/GPR49/GPR67/GRP49/HG38 therapeutic antibody | Petosemtamab | EGFR;LGR5 |
| GMP-Bios-ab-443 | Pre-Made Pimurutamab biosimilar, Whole mAb, Anti-EGFR Antibody: Anti-ERBB/ERRP/HER1/mENA/ERBB1/PIG61/NISBD2 therapeutic antibody | Pimurutamab | EGFR |
| GMP-Bios-ab-513 | Pre-Made Serclutamab biosimilar, Whole mAb ADC, Anti-EGFR Antibody: Anti-ERBB/ERRP/HER1/mENA/ERBB1/PIG61/NISBD2 therapeutic antibody | Serclutamab | EGFR |
| GMP-Bios-ab-586 | Pre-Made Tomuzotuximab biosimilar, Whole mAb, Anti-EGFR Antibody: Anti-ERBB/ERRP/HER1/mENA/ERBB1/PIG61/NISBD2 therapeutic antibody | Tomuzotuximab | EGFR |

EGFR

| Cat No. | Products Name (INN Index) | INN Name | Target |
|------------------|--|----------------------------|----------|
| GMP-Bios-ab-637 | <u>Pre-Made Zalutumumab biosimilar, Whole mAb, Anti-EGFR Antibody: Anti-ERBB/ERRP/HER1/mENA/ERBB1/PIG61/NISBD2 therapeutic antibody</u> | Zalutumumab | EGFR |
| GMP-Bios-ab-642 | <u>Pre-Made Zatuximab biosimilar, Whole mAb, Anti-EGFR Antibody: Anti-ERBB/ERRP/HER1/mENA/ERBB1/PIG61/NISBD2 therapeutic antibody</u> | Zatuximab | EGFR |
| GMP-Bios-ab-656 | <u>Pre-Made Bafisontamab biosimilar, Whole mAb, Anti-EGFR;MET Antibody: Anti-ERBB/ERRP/HER1/mENA/ERBB1/PIG61/NISBD2;AUTS9/DFNB97/HGFR/RCCP2/c-Met therapeutic antibody</u> | Bafisontamab | EGFR;MET |
| GMP-Bios-INN-777 | <u>Pre-Made Cetuximab Sarotalocan Biosimilar, Whole Mab Adc, Anti-Egfr Antibody: Anti-ERBB/ERBB1/ERRP/HER1/NISBD2/PIG61/mENA therapeutic antibody Drug Conjugate</u> | Cetuximab Sarotalocan | EGFR |
| GMP-Bios-INN-801 | <u>Pre-Made Depatuxizumab Mafodotin Biosimilar, Whole Mab Adc, Anti-Egfr Antibody: Anti-ERBB/ERBB1/ERRP/HER1/NISBD2/PIG61/mENA therapeutic antibody Drug Conjugate</u> | Depatuxizumab Mafodotin | EGFR |
| GMP-Bios-INN-884 | <u>Pre-Made Laprituximab Emtansine Biosimilar, Whole Mab Adc, Anti-Egfr Antibody: Anti-ERBB/ERBB1/ERRP/HER1/NISBD2/PIG61/mENA therapeutic antibody Drug Conjugate</u> | Laprituximab Emtansine | EGFR |
| GMP-Bios-INN-900 | <u>Pre-Made Losatuxizumab Vedotin Biosimilar, Whole Mab Adc, Anti-Egfr Antibody: Anti-ERBB/ERBB1/ERRP/HER1/NISBD2/PIG61/mENA therapeutic antibody Drug Conjugate</u> | Losatuxizumab Vedotin | EGFR |
| GMP-Bios-INN-988 | <u>Pre-Made Serclutamab Talirine Biosimilar, Whole Mab Adc, Anti-Egfr Antibody: Anti-ERBB/ERBB1/ERRP/HER1/NISBD2/PIG61/mENA therapeutic antibody Drug Conjugate</u> | Serclutamab Talirine | EGFR |

CD274/PD-L1

| Cat No. | Products Name (INN Index) | INN Name | Target |
|-----------------|--|--------------|-------------------------------|
| GMP-Bios-ab-007 | <u>Pre-Made Acasunlimab biosimilar, Bispecific mAb, Anti-B7-H/B7H1/PDCD1L1/PDCD1LG1/PDL1/hPD-L1;ILA/4-1BB/CDw137 Antibod: Anti-CD274/PD-L1; TNFRSF9/CD137 therapeutic antibody</u> | Acasunlimab | CD274/PD-L1; TNFRSF9/CD137 |
| GMP-Bios-ab-010 | <u>Pre-Made Adebrelimab biosimilar, Whole mAb, Anti-CD274/PD-L1 Antibody: Anti-B7-H/B7H1/PDCD1L1/PDCD1LG1 therapeutic antibody</u> | Adebrelimab | CD274/PD-L1 |
| GMP-Bios-ab-034 | <u>Pre-Made Atezolizumab biosimilar, Whole mAb, Anti-CD274/PD-L1 Antibody: Anti-B7-H/B7H1/PDCD1L1/PDCD1LG1 therapeutic antibody</u> | Atezolizumab | CD274/PD-L1 |
| GMP-Bios-ab-040 | <u>Pre-Made Avelumab biosimilar, Whole mAb, Anti-CD274/PD-L1 Antibody: Anti-B7-H/B7H1/PDCD1L1/PDCD1LG1 therapeutic antibody</u> | Avelumab | CD274/PD-L1 |
| GMP-Bios-ab-071 | <u>Pre-Made Bintrafusp biosimilar, Whole mAb Fusion, Anti-CD274/PD-L1 Antibody: Anti-B7-H/B7H1/PDCD1L1/PDCD1LG1 therapeutic antibody</u> | Bintrafusp | CD274/PD-L1 |
| GMP-Bios-ab-121 | <u>Pre-Made Cosibelimab biosimilar, Whole mAb, Anti-CD274/PD-L1 Antibody: Anti-B7-H/B7H1/PDCD1L1/PDCD1LG1 therapeutic antibody</u> | Cosibelimab | CD274/PD-L1 |
| GMP-Bios-ab-159 | <u>Pre-Made Durvalumab biosimilar, Whole mAb, Anti-CD274/PD-L1 Antibody: Anti-B7-H/B7H1/PDCD1L1/PDCD1LG1 therapeutic antibody</u> | Durvalumab | CD274/PD-L1 |
| GMP-Bios-ab-188 | <u>Pre-Made Envafolimab biosimilar, Single Domain Variable Fragment;H, Anti-CD274/PD-L1 Antibody: Anti-B7-H, B7H1, PD-L1, PDCD1L1, PDCD1LG1, PDL1, hPD-L1 therapeutic antibody</u> | Envafolimab | CD274/PD-L1 |

CD274/PD-L1

| Cat No. | Products Name (INN Index) | INN Name | Target |
|-----------------|--|--------------|---------------------------|
| GMP-Bios-ab-194 | <u>Pre-Made Erfonrilimab biosimilar, Bispecific Single Domains (VH-VH'-CH), Anti-CD274/PD-L1;CTLA4/CTLA-4 Antibody: Anti-B7-H/B7H1/PDCD1L1/PDCD1LG1;CD/GSE/GRD4/ALPS5/CD152/IDDM12/CE LIAC3 therapeutic antibody</u> | Erfonrilimab | CD274/PD-L1; CTLA4/CTLA-4 |
| GMP-Bios-ab-235 | <u>Pre-Made Garivulimab biosimilar, Whole mAb, Anti-CD274/PD-L1 Antibody: Anti-B7-H/B7H1/PDCD1L1/PDCD1LG1 therapeutic antibody</u> | Garivulimab | CD274/PD-L1 |
| GMP-Bios-ab-317 | <u>Pre-Made Lodapolimab biosimilar, Whole mAb, Anti-CD274/PD-L1 Antibody: Anti-B7-H/B7H1/PDCD1L1/PDCD1LG1 therapeutic antibody</u> | Lodapolimab | CD274/PD-L1 |
| GMP-Bios-ab-334 | <u>Pre-Made Manelimab biosimilar, Whole mAb, Anti-CD274/PD-L1 Antibody: Anti-B7-H/B7H1/PDCD1L1/PDCD1LG1 therapeutic antibody</u> | Manelimab | CD274/PD-L1 |
| GMP-Bios-ab-409 | <u>Pre-Made Opucolimab biosimilar, Whole mAb, Anti-CD274/PD-L1 Antibody: Anti-B7-H/B7H1/PDCD1L1/PDCD1LG1 therapeutic antibody</u> | Opucolimab | CD274/PD-L1 |
| GMP-Bios-ab-422 | <u>Pre-Made Pacmilimab biosimilar, Whole mAb, Anti-CD274/PD-L1 Antibody: Anti-B7-H/B7H1/PDCD1L1/PDCD1LG1 therapeutic antibody</u> | Pacmilimab | CD274/PD-L1 |
| GMP-Bios-ab-481 | <u>Pre-Made Retlirafusp biosimilar, Whole mAb Fusion, Anti-CD274/PD-L1 Antibody: Anti-B7-H/B7H1/PDCD1L1/PDCD1LG1 therapeutic antibody</u> | Retlirafusp | CD274/PD-L1 |
| GMP-Bios-ab-533 | <u>Pre-Made Sudubrilimab biosimilar, Whole mAb, Anti-CD274/PD-L1 Antibody: Anti-B7-H/B7H1/PDCD1L1/PDCD1LG1 therapeutic antibody</u> | Sudubrilimab | CD274/PD-L1 |

CD274/PD-L1

| Cat No. | Products Name (INN Index) | INN Name | Target |
|------------------|---|------------------|------------------|
| GMP-Bios-ab-534 | Pre-Made Sugemalimab biosimilar, Whole mAb, Anti-CD274/PD-L1 Antibody: Anti-B7-H/B7H1/PDCD1L1/PDCD1LG1 therapeutic antibody | Sugemalimab | CD274/PD-L1 |
| GMP-Bios-ab-693 | Pre-Made Simridarlimab biosimilar, Whole mAb, Anti-CD47;CD274/PD-L1 Antibody: Anti-IAP/OA3/MER6;B7-H/B7H1/PD-L1/PDCD1L1/PDCD1LG1/PDL1/hPD-L1 therapeutic antibody | Simridarlimab | CD47;CD274/PD-L1 |
| GMP-Bios-ab-695 | Pre-Made Socazolimab biosimilar, Whole mAb, Anti-CD274/PD-L1 Antibody: Anti-B7-H/B7H1/PDCD1L1/PDCD1LG1 therapeutic antibody | Socazolimab | CD274/PD-L1 |
| GMP-Bios-ab-698 | Pre-Made Tagitanlimab biosimilar, Whole mAb, Anti-CD274/PD-L1 Antibody: Anti-B7-H/B7H1/PDCD1L1/PDCD1LG1 therapeutic antibody | Tagitanlimab | CD274/PD-L1 |
| GMP-Bios-INN-762 | Pre-Made Bintrafusp Alfa Biosimilar, Fusion Protein targeting CD274/PD-L1 fused with human TGFBR2 (transforming growth factor beta receptor 2) (1:2) via a peptidyl linker: Recombinant therapeutic protein targeting B7-H/B7H1/PDCD1L1/PDCD1LG1 | Bintrafusp Alfa | CD274/PD-L1 |
| GMP-Bios-INN-797 | Pre-Made Davoceticept Biosimilar, Fusion Protein targeting CD274/PD-L1 fused with human IGHG1 Fc (Fragment constant) via a peptidyl linker: Recombinant therapeutic protein targeting B7-H/B7H1/PDCD1L1/PDCD1LG1 | Davoceticept | CD274/PD-L1 |
| GMP-Bios-INN-972 | Pre-Made Retlirafusp Alfa Biosimilar, Fusion Protein targeting CD274/PD-L1 fused with human TGFBR2 (transforming growth factor beta receptor 2) extracellular fragment (20-136) via a peptidyl linker: Recombinant therapeutic protein targeting B7-H/B7H1/PDCD1L1/PDCD1LG1 | Retlirafusp Alfa | CD274/PD-L1 |

CD3E

| Cat No. | Products Name (INN Index) | INN Name | Target |
|-----------------|---|----------------|-------------------|
| GMP-Bios-ab-006 | Pre-Made Acapatamab biosimilar, Bispecific scFv, Anti-FOLH1/GCPII;CD3E Antibody: Anti-FGCP/GCP2/NAALAD1/PSM/PSMA/mGCP;T3E/TCRE/IMD18 therapeutic antibody | Acapatamab | FOLH1/GCPII ;CD3E |
| GMP-Bios-ab-018 | Pre-Made Alnuctamab biosimilar, Bispecific mAb with Domain Crossover, Anti-TNFRSF17;CD3E Antibody: Anti-BCM/BCMA/CD269/TNFRSF13A;T3E/TCRE/IMD18 therapeutic antibody | Alnuctamab | TNFRSF17; CD3E |
| GMP-Bios-ab-074 | Pre-Made Blinatumomab biosimilar, Bispecific T-Cell Engager, Anti-CD19;CD3E Antibody: Anti-B4/CVID3;T3E/TCRE/IMD18 therapeutic antibody | Blinatumomab | CD19;CD3E |
| GMP-Bios-ab-104 | Pre-Made Cibisatamab biosimilar, Bispecific mAb with Domain Crossover: Anti-CEACAM5;CD3E therapeutic antibody | Cibisatamab | CEACAM5; CD3E |
| GMP-Bios-ab-130 | Pre-Made Dafsolimab biosimilar, Whole mAb, Anti-CD3E Antibody: Anti-T3E/TCRE/IMD18/CD3epsilon therapeutic antibody | Dafsolimab | CD3E |
| GMP-Bios-ab-161 | Pre-Made Duvortuxizumab biosimilar, Bispecific scFv with Crossover, Anti-CD19;CD3E antibody: Anti-B4/CVID3;T3E/TCRE/IMD18 therapeutic antibody | Duvortuxizumab | CD19;CD3E |
| GMP-Bios-ab-173 | Pre-Made Eluvixtamab biosimilar, Bispecific scFv, Anti-CD33;CD3E Antibody: Anti-p67/SIGLEC3/SIGLEC-3;T3E/TCRE/IMD18 therapeutic antibody | Eluvixtamab | CD33;CD3E |
| GMP-Bios-ab-176 | Pre-Made Emerfetamab biosimilar, Bispecific scFv, Anti-CD33;CD3E Antibody: Anti-p67/SIGLEC3/SIGLEC-3;T3E/TCRE/IMD18 therapeutic antibody | Emerfetamab | CD33;CD3E |
| GMP-Bios-ab-189 | Pre-Made Envafolimab biosimilar, Single Domain Variable Fragment;H, Anti-CD274/PD-L1 Antibody: Anti-B7-H/B7H1/PD-L1/PDCD1L1/PDCD1LG1/PDL1/hPD-L1 therapeutic antibody | Epcoritamab | CD3E; MS4A1/CD20 |

CD3E

| Cat No. | Products Name (INN Index) | INN Name | Target |
|-----------------|---|---------------|-------------------------|
| GMP-Bios-ab-197 | <u>Pre-Made Eteviritamab biosimilar, Bispecific scFv, Anti-EGFR;CD3E Antibody: Anti-ERBB/ERRP/HER1/mENA/ERBB1/PIG61/NISBD2;T3E/TCRE/IMD18 therapeutic antibody</u> | Eteviritamab | EGFR;CD3E |
| GMP-Bios-ab-218 | <u>Pre-Made Flotetuzumab biosimilar, Bispecific scFv with Crossover, Anti-IL3RA;CD3E Antibody: Anti-CD123/IL3RX/IL3RY/IL3RAY/hIL-3Ra;T3E/TCRE/IMD18 therapeutic antibody</u> | Flotetuzumab | IL3RA;CD3E |
| GMP-Bios-ab-220 | <u>Pre-Made Foralumab biosimilar, Whole mAb, Anti-CD3E Antibody: Anti-T3E/TCRE/IMD18/CD3epsilon therapeutic antibody</u> | Foralumab | CD3E |
| GMP-Bios-ab-248 | <u>Pre-Made Glofitamab biosimilar, Bispecific mAb with Domain Crossover, Anti-CD3E;MS4A1/CD20 antibody: Anti-T3E/TCRE/IMD18/CD3epsilon;B1/Bp35/CVID5/FMC7/LEU-16/S7therapeutic antibody</u> | Glofitamab | CD3E; MS4A1/ CD20 |
| GMP-Bios-ab-356 | <u>Pre-Made Mosunetuzumab biosimilar, Bispecific mAb, Anti-CD3E;MS4A1/CD20 Antibody: Anti-T3E/TCRE/IMD18/CD3epsilon;B1/Bp35/CVID5/FMC7/LEU-16/S7 therapeutic antibody</u> | Mosunetuzumab | CD3E; MS4A1/ CD20 |
| GMP-Bios-ab-360 | <u>Pre-Made Muromonab biosimilar, Whole mAb, Anti-CD3E Antibody: Anti-T3E/TCRE/IMD18/CD3epsilon therapeutic antibody</u> | Muromonab | CD3E |
| GMP-Bios-ab-380 | <u>Pre-Made Nivatrotamab biosimilar, Bispecific Mixed mAb and scFv, Anti-GD2;CD3E Antibody: Anti-T3E/TCRE/IMD18/CD3epsilon therapeutic antibody</u> | Nivatrotamab | GD2;CD3E |
| GMP-Bios-ab-386 | <u>Pre-Made Obrindatamab biosimilar, Bispecific scFv with Domain Crossover, Anti-CD276;CD3E Antibody: Anti-4lg-B7-H3/B7-H3/B7H3/B7RP-2;T3E/TCRE/IMD18 therapeutic antibody</u> | Obrindatamab | CD276; CD3E |

CD3E

| Cat No. | Products Name (INN Index) | INN Name | Target |
|-----------------|--|---------------|--------------------------|
| GMP-Bios-ab-391 | Pre-Made Odronextamab biosimilar, Bispecific mAb, Anti-MS4A1/CD20;CD3E Antibody: Anti-B1/Bp35/CVID5/FMC7/LEU-16/S7;T3E/TCRE/IMD18 therapeutic antibody | Odronextamab | MS4A1/ CD20;CD3E |
| GMP-Bios-ab-414 | Pre-Made Otelixizumab biosimilar, Whole mAb, Anti-CD3E Antibody: Anti-T3E/TCRE/IMD18/CD3epsilon therapeutic antibody | Otelixizumab | CD3E |
| GMP-Bios-ab-421 | Pre-Made Pacanalotamab biosimilar, Bispecific scFv, Anti-TNFRSF17;CD3E Antibody: Anti-BCM/BCMA/CD269/TNFRSF13A;T3E/TCRE/IMD18 therapeutic antibody | Pacanalotamab | TNFRSF17; CD3E |
| GMP-Bios-ab-429 | Pre-Made Pasotuxizumab biosimilar, Bispecific scFv, Anti-FOLH1/GCPII;CD3E Antibody: Anti-FGCP/GCP2/NAALAD1/PSM/PSMA/mGCP;T3E/TCRE/IMD18 therapeutic antibody | Pasotuxizumab | FOLH1/ GCPII; CD3E |
| GMP-Bios-ab-433 | Pre-Made Pavurutamab biosimilar, Bispecific scFv, Anti-TNFRSF17;CD3E Antibody: Anti-BCM/BCMA/CD269/TNFRSF13A;T3E/TCRE/IMD18 therapeutic antibody | Pavurutamab | TNFRSF17; CD3E |
| GMP-Bios-ab-446 | Pre-Made Plamotamab biosimilar, Bispecific Mixed mAb and scFv, Anti-MS4A1/CD20;CD3E Antibody: Anti-B1/Bp35/CVID5/FMC7/LEU-16/S7;T3E/TCRE/IMD18 therapeutic antibody | Plamotamab | MS4A1/ CD20; CD3E |
| GMP-Bios-ab-500 | Pre-Made Runimotamab biosimilar, Bispecific mAb, Anti-ERBB2/HER2;CD3E Antibody: Anti-CD340/MLN 19/NEU/NGL/TKR1/VSCN2;T3E/TCRE/IMD18 therapeutic antibody | Runimotamab | ERBB2/ HER2; CD3E |
| GMP-Bios-ab-528 | Pre-Made Solitomab biosimilar, Bispecific scFv, Anti-EPCAM;CD3E Antibody: Anti-Ber-Ep4/BerEp4/DIAR5/EGP-2/EGP314/EGP40/ESA/HNPCC8/KS1/4/KSA/M4S1/MIC18/MK-1/MOC-31/TACSTD1/TROP1;T3E/TCRE/IMD18 therapeutic antibody | Solitomab | EPCAM; CD3E |
| GMP-Bios-ab-546 | Pre-Made Talquetamab biosimilar, Bispecific mAb, Anti-GPRC5D;CD3E Antibody: Anti-T3E/TCRE/IMD18/CD3epsilon therapeutic antibody | Talquetamab | GPRC5D; CD3E |

CD3E

| Cat No. | Products Name (INN Index) | INN Name | Target |
|-----------------|---|--------------|--------------------|
| GMP-Bios-ab-552 | <u>Pre-Made Tarlatamab biosimilar, Bispecific scFv, Anti-DLL3;CD3E Antibody: Anti-SCD01;T3E/TCRE/IMD18 therapeutic antibody</u> | Tarlatamab | DLL3;CD3E |
| GMP-Bios-ab-555 | <u>Pre-Made Tebentafusp biosimilar, scFv Fusion, Anti-CD3E Antibody: Anti-T3E/TCRE/IMD18/CD3epsilon therapeutic antibody</u> | Tebentafusp | CD3E |
| GMP-Bios-ab-557 | <u>Pre-Made Teclistamab biosimilar, Bispecific mAb, Anti-TNFRSF17;CD3E Antibody: Anti-BCM/BCMA/CD269/TNFRSF13A;T3E/TCRE/IMD18 therapeutic antibody</u> | Teclistamab | TNFRSF17;CD3E |
| GMP-Bios-ab-562 | <u>Pre-Made Teplizumab biosimilar, Whole mAb, Anti-CD3E Antibody: Anti-T3E/TCRE/IMD18/CD3epsilon therapeutic antibody</u> | Teplizumab | CD3E |
| GMP-Bios-ab-563 | <u>Pre-Made Tepoditamab biosimilar, Bispecific mAb, Anti-CLEC12A/CD371;CD3E Antibody: Anti-CLL-1/CLL1/DCAL-2/MICL;T3E/TCRE/IMD18 therapeutic antibody</u> | Tepoditamab | CLEC12A/CD371;CD3E |
| GMP-Bios-ab-570 | <u>Pre-Made Tidutamab biosimilar, Bispecific Mixed mAb and scFv, Anti-SSTR2;CD3E Antibody: Anti-T3E/TCRE/IMD18/CD3epsilon therapeutic antibody</u> | Tidutamab | SSTR2;CD3E |
| GMP-Bios-ab-619 | <u>Pre-Made Vibecotamab biosimilar, Bispecific Mixed mAb and scFv, Anti-IL3RA;CD3E Antibody: Anti-CD123/IL3RX/IL3RY/IL3RAY/hIL-3Ra;T3E/TCRE/IMD18 therapeutic antibody</u> | Vibecotamab | IL3RA;CD3E |
| GMP-Bios-ab-622 | <u>Pre-Made Visilizumab biosimilar, Whole mAb, Anti-CD3E Antibody: Anti-T3E/TCRE/IMD18/CD3epsilon therapeutic antibody</u> | Visilizumab | CD3E |
| GMP-Bios-ab-624 | <u>Pre-Made Vixtimotamab biosimilar, Bispecific Homodimer (VK-VH-VL'-VH', Tandem diabody), Anti-CD3E;CD33 Antibody: Anti-T3E/TCRE/IMD18;p67/SIGLEC3/SIGLEC-3 therapeutic antibody</u> | Vixtimotamab | CD3E;CD33 |

CD3E

| Cat No. | Products Name (INN Index) | INN Name | Target |
|------------------|---|----------------------|------------------|
| GMP-Bios-ab-663 | Pre-Made Elranatamab biosimilar, Whole mAb, Anti-TNFRSF17;CD3E Antibody: Anti-BCM/BCMA/CD269/TNFRSF13A;T3E/TCRE/IMD18 therapeutic antibody | Elranatamab | TNFRSF17;CD3E |
| GMP-Bios-ab-670 | Pre-Made Gresonitamab biosimilar, Whole mAb, Anti-CLDN18;CD3E Antibody: Anti-SFTA5/SFTPI;T3E/TCRE/IMD18 therapeutic antibody | Gresonitamab | CLDN18;CD3E |
| GMP-Bios-ab-705 | Pre-Made Ubatamab biosimilar, Whole mAb, Anti-MUC16;CD3E Antibody: Anti-CA125;T3E/TCRE/IMD18 therapeutic antibody | Ubatamab | MUC16;CD3E |
| GMP-Bios-ab-708 | Pre-Made Vepsitamab biosimilar, Whole mAb, Anti-MUC17;CD3E Antibody: Anti-MUC-17/MUC-3/MUC3;T3E/TCRE/IMD18 therapeutic antibody | Vepsitamab | MUC17;CD3E |
| GMP-Bios-ab-709 | Pre-Made Voxalatamab biosimilar, Whole mAb, Anti-FOLH1/GCPII;CD3E Antibody: Anti-FGCP/GCP2/NAALAD1/PSM/PSMA/mGCP;T3E/TCRE/IMD18 therapeutic antibody | Voxalatamab | FOLH1/GCPII;CD3E |
| GMP-Bios-INN-772 | Pre-Made Catumaxomab Biosimilar, Bispecific, Anti-Cd3E; Epcam Antibody: Anti-T3E/TCRE/IMD18/CD3epsilon;Ber-Ep4/BerEp4/DIAR5/EGP-2/EGP314/EGP40/ESA/HNPCC8/KS1/4/KSA/M4S1/MIC18/MK-1/MOC-31/TACSTD1/TROP1 therapeutic antibody | Catumaxomab | CD3E;EPCAM |
| GMP-Bios-INN-790 | Pre-Made Dafsolimab Setaritox Biosimilar, Whole Mab Adc, Anti-Cd3E Antibody: Anti-CD3epsilon/IMD18/T3E/TCRE therapeutic antibody Drug Conjugate | Dafsolimab Setaritox | CD3E |
| GMP-Bios-INN-845 | Pre-Made Ertumaxomab Biosimilar, Bispecific, Anti-Cd3E; Erbb2 Antibody: Anti-T3E/TCRE/IMD18/CD3epsilon;CD340/neu/MLN 19/NEU/NGL/TKR1/VSCN2 therapeutic antibody | Ertumaxomab | CD3E;ERBB2 |
| GMP-Bios-INN-921 | Pre-Made Muromonab-Cd3 3Iosimilar, Whole Mab, Anti-Cd3E Antibody: Anti-CD3epsilon/IMD18/T3E/TCRE therapeutic antibody | Muromonab-Cd3 | CD3E |

MS4A1/CD20

| Cat No. | Products Name (INN Index) | INN Name | Target |
|-----------------|---|---------------|-----------------|
| GMP-Bios-ab-013 | <u>Pre-Made Afutuzumab biosimilar, Whole mAb, Anti-MS4A1/CD20 Antibody: Anti-B1/Bp35/CVID5/FMC7/LEU-16/S7 therapeutic antibody</u> | Afutuzumab | MS4A1/CD20 |
| GMP-Bios-ab-075 | <u>Pre-Made Blontuvetmab biosimilar, Canine Whole mAb, Anti-MS4A1/CD20 Antibody: Anti-B1/Bp35/CVID5/FMC7/LEU-16/S7 therapeutic antibody</u> | Blontuvetmab | MS4A1/CD20 |
| GMP-Bios-ab-149 | <u>Pre-Made Divozilimab biosimilar, Whole mAb, Anti-MS4A1/CD20 Antibody: Anti-B1/Bp35/CVID5/FMC7/LEU-16/S7 therapeutic antibody</u> | Divozilimab | MS4A1/CD20 |
| GMP-Bios-ab-189 | <u>Pre-Made Envafolimab biosimilar, Single Domain Variable Fragment;H, Anti-CD274/PD-L1 Antibody: Anti-B7-H/B7H1/PD-L1/PDCD1L1/PDCD1LG1/PDL1/hPD-L1 therapeutic antibody</u> | Epcoritamab | CD3E;MS4A1/CD20 |
| GMP-Bios-ab-192 | <u>Pre-Made Eramkafusp biosimilar, Whole mAb Fusion, Anti-MS4A1/CD20 Antibody: Anti-B1/Bp35/CVID5/FMC7/LEU-16/S7 therapeutic antibody</u> | Eramkafusp | MS4A1/CD20 |
| GMP-Bios-ab-248 | <u>Pre-Made Glofitamab biosimilar, Bispecific mAb with Domain Crossover, Anti-CD3E;MS4A1/CD20 antibody: Anti-T3E/TCRE/IMD18/CD3epsilon;B1/Bp35/CVID5/FMC7/LEU-16/S7therapeutic antibody</u> | Glofitamab | CD3E;MS4A1/CD20 |
| GMP-Bios-ab-356 | <u>Pre-Made Mosunetuzumab biosimilar, Bispecific mAb, Anti-CD3E;MS4A1/CD20 Antibody: Anti-T3E/TCRE/IMD18/CD3epsilon;B1/Bp35/CVID5/FMC7/LEU-16/S7 therapeutic antibody</u> | Mosunetuzumab | CD3E;MS4A1/CD20 |
| GMP-Bios-ab-385 | <u>Pre-Made Obinutuzumab biosimilar, Whole mAb, Anti-MS4A1/CD20 Antibody: Anti-B1/Bp35/CVID5/MC7/LEU-16/S7 therapeutic antibody</u> | Obinutuzumab | MS4A1/CD20 |

MS4A1/CD20

| Cat No. | Products Name (INN Index) | INN Name | Target |
|-----------------|--|--------------|---------------------|
| GMP-Bios-ab-387 | <u>Pre-Made Ocaratuzumab biosimilar, Whole mAb, Anti-MS4A1/CD20 Antibody: Anti-B1/Bp35/CVID5/FMC7/LEU-16/S7 therapeutic antibody</u> | Ocaratuzumab | MS4A1/CD20 |
| GMP-Bios-ab-389 | <u>Pre-Made Ocrelizumab biosimilar, Whole mAb, Anti-MS4A1/CD20 Antibody: Anti-B1/Bp35/CVID5/FMC7/LEU-16/S7 therapeutic antibody</u> | Ocrelizumab | MS4A1/CD20 |
| GMP-Bios-ab-391 | <u>Pre-Made Odronextamab biosimilar, Bispecific mAb, Anti-MS4A1/CD20;CD3E Antibody: Anti-B1/Bp35/CVID5/FMC7/LEU-16/S7;T3E/TCRE/IMD18 therapeutic antibody</u> | Odronextamab | MS4A1/CD20; CD3E |
| GMP-Bios-ab-392 | <u>Pre-Made Ofatumumab biosimilar, Whole mAb, Anti-MS4A1/CD20 Antibody: Anti-B1/Bp35/CVID5/FMC7/LEU-16/S7 therapeutic antibody</u> | Ofatumumab | MS4A1/CD20 |
| GMP-Bios-ab-446 | <u>Pre-Made Plamotamab biosimilar, Bispecific Mixed mAb and scFv, Anti-MS4A1/CD20;CD3E Antibody: Anti-B1/Bp35/CVID5/FMC7/LEU-16/S7;T3E/TCRE/IMD18 therapeutic antibody</u> | Plamotamab | MS4A1/CD20; CD3E |
| GMP-Bios-ab-485 | <u>Pre-Made Ripertamab biosimilar, Whole mAb, Anti-MS4A1/CD20 Antibody: Anti-B1/Bp35/CVID5/FMC7/LEU-16/S7 therapeutic antibody</u> | Ripertamab | MS4A1/CD20 |
| GMP-Bios-ab-487 | <u>Pre-Made Rituximab biosimilar, Whole mAb, Anti-MS4A1/CD20 Antibody: Anti-B1/Bp35/CVID5/FMC7/LEU-16/S7 therapeutic antibody</u> | Rituximab | MS4A1/CD20 |
| GMP-Bios-ab-598 | <u>Pre-Made Ublituximab biosimilar, Whole mAb, Anti-MS4A1/CD20 Antibody: Anti-B1/Bp35/CVID5/FMC7/LEU-16/S7 therapeutic antibody</u> | Ublituximab | MS4A1/CD20 |

MS4A1/CD20

| Cat No. | Products Name (INN Index) | INN Name | Target |
|-------------------|---|--|------------|
| GMP-Bios-ab-617 | <u>Pre-Made Veltuzumab biosimilar, Whole mAb, Anti-MS4A1/CD20 Antibody: Anti-B1/Bp35/CVID5/FMC7/LEU-16/S7 therapeutic antibody</u> | Veltuzumab | MS4A1/CD20 |
| GMP-Bios-ab-651 | <u>Pre-Made Zuberitamab biosimilar, Whole mAb, Anti-MS4A1/CD20 Antibody: Anti-B1/Bp35/CVID5/FMC7/LEU-16/S7 therapeutic antibody</u> | Zuberitamab | MS4A1/CD20 |
| GMP-Bios-INN-838 | <u>Pre-Made Eritumomab Biosimilar, Whole Mab, Anti-MS4A1/CD20 Antibody: Anti-B1/Bp35/CVID5/FMC7/LEU-16/S7 therapeutic antibody</u> | Eritumomab | MS4A1/CD20 |
| GMP-Bios-INN-843 | <u>Pre-Made Eramkafusp Alfa Biosimilar, Fusion Protein targeting MS4A1/CD20 fused with human IFNA2 (interferon alpha 2) via a peptidyl linker: Recombinant therapeutic protein targeting B1/Bp35/CVID5/FMC7/LEU-16/S7</u> | Eramkafusp Alfa | MS4A1/CD20 |
| GMP-Bios-INN-859 | <u>Pre-Made Ibritumomab Tiuxetan Biosimilar, Radiolabelled Antibody, Anti-MS4A1/CD20 Antibody: Anti-B1/Bp35/CVID5/FMC7/LEU-16/S7 therapeutic antibody</u> | Ibritumomab Tiuxetan | MS4A1/CD20 |
| GMP-Bios-INN-1012 | <u>Pre-Made Technetium (99Mtc) Nofetumomab Merpentan Biosimilar, Radiolabelled Antibody: Anti-MS4A1/CD20 therapeutic antibody</u> | Technetium (99Mtc) Nofetumomab Merpentan | MS4A1/CD20 |
| GMP-Bios-INN-1028 | <u>Pre-Made Tositumomab Biosimilar, Radiolabelled Antibody, Anti-MS4A1/CD20 Antibody: Anti-B1/Bp35/CVID5/FMC7/LEU-16/S7 therapeutic antibody</u> | Tositumomab | MS4A1/CD20 |

ERBB2/HER2

| Cat No. | Products Name (INN Index) | INN Name | Target |
|-----------------|---|---------------|-----------------|
| GMP-Bios-ab-119 | <u>Pre-Made Coprelotamab biosimilar, Whole mAb, Anti-ERBB2/HER2 Antibody: Anti-CD340/neu/MLN 19/NEU/NGL/TKR1/VSCN2 therapeutic antibody</u> | Coprelotamab | ERBB2/HER2 |
| GMP-Bios-ab-148 | <u>Pre-Made Disitamab biosimilar, Whole mAb ADC, Anti-ERBB2/HER2 Antibody: Anti-CD340/neu/MLN 19/NEU/NGL/TKR1/VSCN2 therapeutic antibody</u> | Disitamab | ERBB2/HER2 |
| GMP-Bios-ab-230 | <u>Pre-Made Gancotamab biosimilar, scFv, Anti-ERBB2/HER2 Antibody: Anti-CD340/neu/MLN 19/NEU/NGL/TKR1/VSCN2 therapeutic antibody</u> | Gancotamab | ERBB2/HER2 |
| GMP-Bios-ab-335 | <u>Pre-Made Margetuximab biosimilar, Whole mAb, Anti-ERBB2/HER2 Antibody: Anti-CD340/neu/MLN 19/NEU/NGL/TKR1/VSCN2 therapeutic antibody</u> | Margetuximab | ERBB2/HER2 |
| GMP-Bios-ab-336 | <u>Pre-Made Marstacimab biosimilar, Whole mAb, Anti-ERBB2/HER2 Antibody: Anti-CD340/neu/MLN 19/NEU/NGL/TKR1/VSCN2 therapeutic antibody</u> | Marstacimab | ERBB2/HER2 |
| GMP-Bios-ab-439 | <u>Pre-Made Pertuzumab biosimilar, Whole mAb, Anti-ERBB2/HER2 Antibody: Anti-CD340/neu/MLN 19/NEU/NGL/TKR1/VSCN2 therapeutic antibody</u> | Pertuzumab | ERBB2/HER2 |
| GMP-Bios-ab-500 | <u>Pre-Made Runimotamab biosimilar, Bispecific mAb, Anti-ERBB2/HER2;CD3E Antibody: Anti-CD340/MLN 19/NEU/NGL/TKR1/VSCN2;T3E/TCRE/IMD18 therapeutic antibody</u> | Runimotamab | ERBB2/HER2;CD3E |
| GMP-Bios-ab-576 | <u>Pre-Made Timigutuzumab biosimilar, Whole mAb, Anti-ERBB2/HER2 Antibody: Anti-CD340/neu/MLN 19/NEU/NGL/TKR1/VSCN2 therapeutic antibody</u> | Timigutuzumab | ERBB2/HER2 |
| GMP-Bios-ab-593 | <u>Pre-Made Trastuzumab biosimilar, Whole mAb, Anti-ERBB2/HER2 Antibody: Anti-CD340/neu/MLN 19/NEU/NGL/TKR1/VSCN2 therapeutic antibody</u> | Trastuzumab | ERBB2/HER2 |

ERBB2/HER2

| Cat No. | Products Name (INN Index) | INN Name | Target |
|-------------------|--|------------------------|-----------------------------|
| GMP-Bios-ab-639 | Pre-Made Zanidatamab biosimilar, Bispecific mAb, Anti-ERBB2/HER2;ERBB2/HER2 Antibody: Anti-CD340/HER-2/MLN 19/NEU/NGL/TKR1/VSCN2;CD340/neu/MLN 19/NEU/NGL/TKR1/VSCN2 therapeutic antibody | Zanidatamab | ERBB2/HER2; ERBB2/HER2 |
| GMP-Bios-ab-645 | Pre-Made Zenocutuzumab biosimilar, Bispecific mAb, Anti-ERBB3/ErbB-3;ERBB2/HER2 Antibody: Anti-FERLK/HER3/LCCS2/MDA-BF-1/VSCN1/c-erbB3/erbB3-S/p180-ErbB3/p45-sErbB3/p85-sErbB3;CD340/neu/MLN 19/NEU/NGL/TKR1/VSCN2 therapeutic antibody | Zenocutuzumab | ERBB3/ErbB-3 ;ERBB2/HER2 |
| GMP-Bios-ab-667 | Pre-Made Fidasimtamab biosimilar, Whole mAb, Anti-PDCD1/PD-1;ERBB2/HER2 Antibody: Anti-CD279/PD1/SLEB2/hSLE1;CD340/neu/MLN 19/NEU/NGL/TKR1/VSCN2 therapeutic antibody | Fidasimtamab | PDCD1/PD-1; ERBB2/HER2 |
| GMP-Bios-INN-780 | Pre-Made Cinrebafusp Alfa P Alfaiosimilar, Bispecific, Anti-ERBB2/HER2;TNFRSF9 Antibody: Anti-CD340/MLN 19/NEU/NGL/TKR1/VSCN2;ILA/4-1BB/CDw137 therapeutic antibody | Cinrebafusp Alfa | ERBB2/HER2 ;TNFRSF9 |
| GMP-Bios-INN-804 | Pre-Made Disitamab Vedotin Biosimilar, Whole Mab Adc, Anti-ERBB2/HER2 Antibody: Anti-CD340/neu/MLN 19/NEU/NGL/TKR1/VSCN2/c-ERB-2/c-ERB2 therapeutic antibody Drug Conjugate | Disitamab Vedotin | ERBB2/HER2 |
| GMP-Bios-INN-1030 | Pre-Made Trastuzumab Beta Biosimilar, Whole Mab, Anti-ERBB2/HER2 Antibody: Anti-CD340/neu/MLN 19/NEU/NGL/TKR1/VSCN2/c-ERB-2/c-ERB2 therapeutic antibody | Trastuzumab Beta | ERBB2/HER2 |
| GMP-Bios-INN-1031 | Pre-Made Trastuzumab Deruxtecan Biosimilar, Whole Mab Adc, Anti-ERBB2/HER2 Antibody: Anti-CD340/neu/MLN 19/NEU/NGL/TKR1/VSCN2/c-ERB-2/c-ERB2 therapeutic antibody Drug Conjugate | Trastuzumab Deruxtecan | ERBB2/HER2 |

ERBB2/HER2

| Cat No. | Products Name (INN Index) | INN Name | Target |
|-------------------|---|--------------------------|---------------------------|
| GMP-Bios-INN-1032 | <u>Pre-Made Trastuzumab Duocarmazine Biosimilar, Whole Mab Adc, Anti-ERBB2/HER2 Antibody: Anti-CD340/neu/MLN 19/NEU/NGL/TKR1/VSCN2/c-ERB-2/c-ERB2 therapeutic antibody Drug Conjugate</u> | Trastuzumab Duocarmazine | ERBB2/HER2 |
| GMP-Bios-INN-1033 | <u>Pre-Made Trastuzumab Emtansine Biosimilar, Whole Mab Adc, Anti-ERBB2/HER2 Antibody: Anti-CD340/neu/MLN 19/NEU/NGL/TKR1/VSCN2/c-ERB-2/c-ERB2 therapeutic antibody Drug Conjugate</u> | Trastuzumab Emtansine | ERBB2/HER2 |
| GMP-Bios-INN-1055 | <u>Pre-Made Zanidatamab Zovodotin B Zovodotinosimilar, Bispecific/Biparatopic, Anti-ERBB2/HER2;ERBB2/HER2 Therapeutic/Biparatopic Antibody Antibody: Anti-CD340/MLN 19/NEU/NGL/TKR1/VSCN2;CD340/neu/MLN 19/NEU/NGL/TKR1/VSCN2</u> | Zanidatamab Zovodotin | ERBB2/HER2; ERBB2/HER2 |

TNF

| Cat No. | Products Name (INN Index) | INN Name | Target |
|-----------------|---|--------------|----------------------|
| GMP-Bios-ab-009 | <u>Pre-Made Adalimumab biosimilar, Whole mAb, Anti-TNFA/TNF Antibody: Anti-DIF/TNFSF2/TNLTG1F therapeutic antibody</u> | Adalimumab | TNFA/TNF |
| GMP-Bios-ab-100 | <u>Pre-Made Certolizumab biosimilar, Fab, Anti-TNFA/TNF Antibody: Anti-DIF/TNFSF2/TNLTG1F therapeutic antibody</u> | Certolizumab | TNFA/TNF |
| GMP-Bios-ab-249 | <u>Pre-Made Golimumab biosimilar, Whole mAb, Anti-TNFA/TNF Antibody: Anti-DIF/TNFSF2/TNLTG1F therapeutic antibody</u> | Golimumab | TNFA/TNF |
| GMP-Bios-ab-274 | <u>Pre-Made Infliximab biosimilar, Whole mAb, Anti-TNFA/TNF Antibody: Anti-DIF/TNFSF2/TNLTG1F therapeutic antibody</u> | Infliximab | TNFA/TNF |
| GMP-Bios-ab-310 | <u>Pre-Made Licamimab biosimilar, scFv, Anti-TNFA/TNF Antibody: Anti-DIF/TNFSF2/TNLTG1F therapeutic antibody</u> | Licamimab | TNFA/TNF |
| GMP-Bios-ab-419 | <u>Pre-Made Ozoralizumab biosimilar, Bispecific Single Domains (VH-VH'-VH), Anti-TNFA/TNF;ALB Antibody: Anti-DIF/TNF-alpha/TNFSF2/TNLTG1F;FDAHT/HSA/PRO00883/PRO0903/PRO1341 therapeutic antibody</u> | Ozoralizumab | TNFA/TNF; ALB |
| GMP-Bios-ab-445 | <u>Pre-Made Placulumab biosimilar, Single Domain Variable Fragment (VL + Fc), Anti-TNFA/TNF Antibody: Anti-DIF/TNFSF2/TNLTG1F therapeutic antibody</u> | Placulumab | TNFA/TNF |
| GMP-Bios-ab-478 | <u>Pre-Made Remtolumab biosimilar, Bispecific Dual Variable Domain IG: Anti-IL17A/IL17;TNFA/TNF therapeutic antibody</u> | Remtolumab | IL17A/IL17; TNFA/TNF |

TNF

| Cat No. | Products Name (INN Index) | INN Name | Target |
|-------------------|--|-----------------|--------|
| GMP-Bios-INN-718 | <u>Pre-Made Adalimumab Beta Biosimilar, Whole Mab, Anti-Tnf Antibody: Anti-DIF/TNFSF2/TNLTG1F therapeutic antibody</u> | Adalimumab Beta | TNF |
| GMP-Bios-INN-721 | <u>Pre-Made Afelimomab Biosimilar, Fab Fusion, Anti-Tnf Antibody: Anti-DIF/TNFSF2/TNLTG1F therapeutic antibody</u> | Afelimomab | TNF |
| GMP-Bios-INN-846 | <u>Pre-Made Etanercept Biosimilar, Fusion Protein targeting TNF fused with human IGHG1 Fc (Fragment constant): Recombinant therapeutic protein targeting DIF/TNFSF2/TNLTG1F</u> | Etanercept | TNF |
| GMP-Bios-INN-887 | <u>Pre-Made Lenercept Biosimilar, Fusion Protein targeting TNF fused with human IGHG1 Fc (Fragment constant): Recombinant therapeutic protein targeting DIF/TNFSF2/TNLTG1F</u> | Lenercept | TNF |
| GMP-Bios-INN-927 | <u>Pre-Made Nerelimomab Biosimilar, Whole Mab, Anti-Tnf Antibody: Anti-DIF/TNFSF2/TNLTG1F therapeutic antibody</u> | Nerelimomab | TNF |
| GMP-Bios-INN-935 | <u>Pre-Made Onercept Biosimilar, Recombinant Protein targeting TNF: Recombinant therapeutic protein targeting DIF/TNFSF2/TNLTG1F</u> | Onercept | TNF |
| GMP-Bios-INN-938 | <u>Pre-Made Opinercept Biosimilar, Fusion Protein targeting TNF fused with human IGHG1 Fc (Fragment constant): Recombinant therapeutic protein targeting DIF/TNFSF2/TNLTG1F</u> | Opinercept | TNF |
| GMP-Bios-INN-1036 | <u>Pre-Made Tulinercept Biosimilar, Fusion Protein targeting TNF fused with human IGHG1 Fc (Fragment constant): Recombinant therapeutic protein targeting DIF/TNFSF2/TNLTG1F</u> | Tulinercept | TNF |

CD19

| Cat No. | Products Name (INN Index) | INN Name | Target |
|-----------------|---|----------------|-----------|
| GMP-Bios-ab-074 | <u>Pre-Made Blinatumomab biosimilar, Bispecific T-Cell Engager, Anti-CD19;CD3E Antibody: Anti-B4/CVID3;T3E/TCRE/IMD18 therapeutic antibody</u> | Blinatumomab | CD19;CD3E |
| GMP-Bios-ab-116 | <u>Pre-Made Coltuximab biosimilar, Whole mAb ADC, Anti-CD19 Antibody: Anti-B4/CVID3 therapeutic antibody</u> | Coltuximab | CD19 |
| GMP-Bios-ab-139 | <u>Pre-Made Denintuzumab biosimilar, Whole mAb ADC, Anti-CD19 Antibody: Anti-B4/CVID3 therapeutic antibody</u> | Denintuzumab | CD19 |
| GMP-Bios-ab-161 | <u>Pre-Made Duvortuxizumab biosimilar, Bispecific scFv with Crossover, Anti-CD19;CD3E antibody: Anti-B4/CVID3;T3E/TCRE/IMD18 therapeutic antibody</u> | Duvortuxizumab | CD19;CD3E |
| GMP-Bios-ab-273 | <u>Pre-Made Inebilizumab biosimilar, Whole mAb, Anti-CD19 Antibody: Anti-B4/CVID3 therapeutic antibody</u> | Inebilizumab | CD19 |
| GMP-Bios-ab-320 | <u>Pre-Made Loncastuximab biosimilar, Whole mAb ADC, Anti-CD19 Antibody: Anti-B4/CVID3 therapeutic antibody</u> | Loncastuximab | CD19 |
| GMP-Bios-ab-383 | <u>Pre-Made Obexelimab biosimilar, Whole mAb, Anti-CD19 Antibody: Anti-B4/CVID3 therapeutic antibody</u> | Obexelimab | CD19 |
| GMP-Bios-ab-543 | <u>Pre-Made Tafasitamab biosimilar, Whole mAb, Anti-CD19 Antibody: Anti-B4/CVID3 therapeutic antibody</u> | Tafasitamab | CD19 |

CD19

| Cat No. | Products Name (INN Index) | INN Name | Target |
|-------------------|--|------------------------|--------------|
| GMP-Bios-ab-664 | Pre-Made Ensomafusp Biosimilar, Fusion Protein targeting CD19: Recombinant therapeutic protein targeting B4/CVID3 | Ensomafusp | CD19 |
| GMP-Bios-INN-786 | Pre-Made Coltuximab Ravtansine Biosimilar, Whole Mab Adc, Anti-Cd19 Antibody: Anti-B4/CVID3 therapeutic antibody Drug Conjugate | Coltuximab Ravtansine | CD19 |
| GMP-Bios-INN-800 | Pre-Made Denintuzumab Mafodotin Biosimilar, Whole Mab Adc, Anti-Cd19 Antibody: Anti-B4/CVID3 therapeutic antibody Drug Conjugate | Denintuzumab Mafodotin | CD19 |
| GMP-Bios-INN-836 | Pre-Made Ensomafusp Alfa Alfaiosimilar, Bispecific, Anti-Cd19; Tnfrsf9 Antibody: Anti-B4/CVID3;ILA/4-1BB/CDw137 therapeutic antibody | Ensomafusp Alfa | CD19;TNFRSF9 |
| GMP-Bios-INN-896 | Pre-Made Loncastuximab Tesirine Biosimilar, Whole Mab Adc, Anti-Cd19 Antibody: Anti-B4/CVID3 therapeutic antibody Drug Conjugate | Loncastuximab Tesirine | CD19 |
| GMP-Bios-INN-1008 | Pre-Made Taplitumomab Paptox biosimilar, Fusion Protein, Taplitumomab-Anti-CD19 Antibody: Anti-B4/CVID3 therapeutic antibody s | Taplitumomab Paptox | CD19 |

CD40

| Cat No. | Products Name (INN Index) | INN Name | Target |
|-----------------|---|--------------|--------|
| GMP-Bios-ab-073 | Pre-Made Bleelumab biosimilar, Whole mAb, Anti-CD40 Antibody: Anti-p50/Bp50/CDW40/TNFRSF5 therapeutic antibody | Bleelumab | CD40 |
| GMP-Bios-ab-128 | Pre-Made Dacetuzumab biosimilar, Whole mAb, Anti-CD40 Antibody: Anti-p50/Bp50/CDW40/TNFRSF5 therapeutic antibody | Dacetuzumab | CD40 |
| GMP-Bios-ab-242 | Pre-Made Giloralimab biosimilar, Whole mAb, Anti-CD40 Antibody: Anti-p50/Bp50/CDW40/TNFRSF5 therapeutic antibody | Giloralimab | CD40 |
| GMP-Bios-ab-280 | Pre-Made Iscalimab biosimilar, Whole mAb, Anti-CD40 Antibody: Anti-p50/Bp50/CDW40/TNFRSF5 therapeutic antibody | Iscalimab | CD40 |
| GMP-Bios-ab-325 | Pre-Made Lucatumumab biosimilar, Whole mAb, Anti-CD40 Antibody: Anti-p50/Bp50/CDW40/TNFRSF5 therapeutic antibody | Lucatumumab | CD40 |
| GMP-Bios-ab-351 | Pre-Made Mitazalimab biosimilar, Whole mAb, Anti-CD40 Antibody: Anti-p50/Bp50/CDW40/TNFRSF5 therapeutic antibody | Mitazalimab | CD40 |
| GMP-Bios-ab-471 | Pre-Made Ravagalimab biosimilar, Whole mAb, Anti-CD40 Antibody: Anti-p50/Bp50/CDW40/TNFRSF5 therapeutic antibody | Ravagalimab | CD40 |
| GMP-Bios-ab-511 | Pre-Made Selicrelumab biosimilar, Whole mAb, Anti-CD40 Antibody: Anti-p50/Bp50/CDW40/TNFRSF5 therapeutic antibody | Selicrelumab | CD40 |
| GMP-Bios-ab-529 | Pre-Made Sotigalimab biosimilar, Whole mAb, Anti-CD40 Antibody: Anti-p50/Bp50/CDW40/TNFRSF5 therapeutic antibody | Sotigalimab | CD40 |

CD40

| Cat No. | Products Name (INN Index) | INN Name | Target |
|-------------------|---|--------------|---------------------|
| GMP-Bios-ab-609 | Pre-Made Vanalimab biosimilar, Whole mAb, Anti-CD40 Antibody: Anti-p50/Bp50/CDW40/TNFRSF5 therapeutic antibody | Vanalimab | CD40 |
| GMP-Bios-ab-701 | Pre-Made Tecaginlimab biosimilar, Whole mAb, Anti-CD40; TNFRSF9/CD137 Antibody: Anti-p50/Bp50/CDW40/TNFRSF5;ILA/4-1BB/CDw137 therapeutic antibody | Tecaginlimab | CD40; TNFRSF9/CD137 |
| GMP-Bios-INN-1019 | Pre-Made Teneliximab Biosimilar, Whole Mab, Anti-Cd40 Antibody: Anti-Bp50/CDW40/TNFRSF5/p50 therapeutic antibody | Teneliximab | CD40 |

MUC1

| Cat No. | Products Name (INN Index) | INN Name | Target |
|------------------|---|-------------------------|--------|
| GMP-Bios-ab-092 | <u>Pre-Made Cantuzumab biosimilar, Whole mAb ADC, Anti-MUC1 Antibody: Anti-ADMCKD/ADMCKD1/ADTKD2/CA 15-3/CD227/Ca15-3/EMA/H23AG/KL-6/MAM6/MCD/MCKD/MCKD1/SEC/X/ZD/PEM/PEMT/PUM therapeutic antibody</u> | Cantuzumab | MUC1 |
| GMP-Bios-ab-112 | <u>Pre-Made Clivatuzumab biosimilar, Whole mAb Radiolabelled, Anti-MUC1 Antibody: Anti-ADMCKD/ADMCKD1/ADTKD2/CA 15-3/CD227/Ca15-3/EMA/H23AG/KL-6/MAM6/MCD/MCKD/MCKD1/SEC/X/ZD/PEM/PEMT/PUM therapeutic antibody</u> | Clivatuzumab | MUC1 |
| GMP-Bios-ab-236 | <u>Pre-Made Gatipotuzumab biosimilar, Whole mAb, Anti-MUC1 Antibody: Anti-ADMCKD/ADMCKD1/ADTKD2/CA 15-3/CD227/Ca15-3/EMA/H23AG/KL-6/MAM6/MCD/MCKD/MCKD1/SEC/X/ZD/PEM/PEMT/PUM therapeutic antibody</u> | Gatipotuzumab | MUC1 |
| GMP-Bios-ab-426 | <u>Pre-Made PankoMab biosimilar, Whole mAb, Anti-MUC1 Antibody: Anti-ADMCKD/ADMCKD1/ADTKD2/CA 15-3/CD227/Ca15-3/EMA/H23AG/KL-6/MAM6/MCD/MCKD/MCKD1/SEC/X/ZD/PEM/PEMT/PUM therapeutic antibody</u> | PankoMab | MUC1 |
| GMP-Bios-INN-769 | <u>Pre-Made Cantuzumab Mertansine Biosimilar, Whole Mab Adc, Anti-Muc1 Antibody: Anti-ADMCKD/ADMCKD1/ADTKD2/CA 15-3/CD227/Ca15-3/EMA/H23AG/KL-6/MAM6/MCD/MCKD/MCKD1/SEC/X/ZD/PEM/PEMT/PUM therapeutic antibody Drug Conjugate</u> | Cantuzumab Mertansine | MUC1 |
| GMP-Bios-INN-770 | <u>Pre-Made Cantuzumab Ravtansine Biosimilar, Whole Mab Adc, Anti-Muc1 Antibody: Anti-ADMCKD/ADMCKD1/ADTKD2/CA 15-3/CD227/Ca15-3/EMA/H23AG/KL-6/MAM6/MCD/MCKD/MCKD1/SEC/X/ZD/PEM/PEMT/PUM therapeutic antibody Drug Conjugate</u> | Cantuzumab Ravtansine | MUC1 |
| GMP-Bios-INN-784 | <u>Pre-Made Clivatuzumab Tetraxetan Biosimilar, Whole Mab Adc, Anti-Muc1 Antibody: Anti-ADMCKD/ADMCKD1/ADTKD2/CA 15-3/CD227/Ca15-3/EMA/H23AG/KL-6/MAM6/MCD/MCKD/MCKD1/SEC/X/ZD/PEM/PEMT/PUM therapeutic antibody Drug Conjugate</u> | Clivatuzumab Tetraxetan | MUC1 |



MUC1

| Cat No. | Products Name (INN Index) | INN Name | Target |
|-------------------|--|---|--------|
| GMP-Bios-INN-839 | <u>Pre-Made Epitumomab Cituxetan Biosimilar, Radiolabelled Antibody, Anti-Muc1 Antibody:</u> <u>Anti-ADMCKD/ADMCKD1/ADTKD2/CA 15-3/CD227/Ca15-3/EMA/H23AG/KL-6/MAM6/MCD/MCKD/MCKD1/SEC/X/ZD/PEM/PEMT/PUM therapeutic antibody</u> | Epitumomab Cituxetan | MUC1 |
| GMP-Bios-INN-922 | <u>Pre-Made Nacolomab Tafenatox biosimilar, Fusion Protein, Nacolomab-Anti-MUC1 Antibody:</u> <u>Anti-ADMCKD/ADMCKD1/ADTKD2/CA 15-3/CD227/Ca15-3/EMA/H23AG/KL-6/MAM6/MCD/MCKD/MCKD1/SEC/X/ZD/PEM/PEMT/PUM therapeutic antibody fused with Staphylococcus aureus enterotoxin A</u> | Nacolomab Tafenatox | MUC1 |
| GMP-Bios-INN-997 | <u>Pre-Made Sontuzumab Biosimilar, Whole Mab, Anti-Muc1 Antibody: Anti-ADMCKD/ADMCKD1/ADTKD2/CA 15-3/CD227/Ca15-3/EMA/H23AG/KL-6/MAM6/MCD/MCKD/MCKD1/SEC/X/ZD/PEM/PEMT/PUM therapeutic antibody</u> | Sontuzumab | MUC1 |
| GMP-Bios-INN-1052 | <u>Pre-Made Yttrium (90Y) Clivatuzumab Tetraxetan Biosimilar, Radiolabelled Antibody, Anti-Muc1 Antibody:</u> <u>Anti-ADMCKD/ADMCKD1/ADTKD2/CA 15-3/CD227/Ca15-3/EMA/H23AG/KL-6/MAM6/MCD/MCKD/MCKD1/SEC/X/ZD/PEM/PEMT/PUM therapeutic antibody</u> | Yttrium (90Y) Clivatuzumab Tetraxetan | MUC1 |

PCSK9

| Cat No. | Products Name (INN Index) | INN Name | Target |
|-----------------|--|-------------------|--------|
| GMP-Bios-ab-016 | <u>Pre-Made Alirocumab biosimilar, Whole mAb, Anti-PCSK9</u> <u>Antibody: Anti-FH3/FHCL3/HCHOLA3/LDLCQ1/</u> <u>NARC-1/NARC1/PC9 therapeutic antibody</u> | Alirocumab | PCSK9 |
| GMP-Bios-ab-077 | <u>Pre-Made Bococizumab biosimilar, Whole mAb, Anti-PCSK9</u> <u>Antibody: Anti-FH3/FHCL3/HCHOLA3/LDLCQ1/</u> <u>NARC-1/NARC1/PC9 therapeutic antibody</u> | Bococizumab | PCSK9 |
| GMP-Bios-ab-163 | <u>Pre-Made Ebronucimab biosimilar, Whole mAb, Anti-PCSK9</u> <u>Antibody: Anti-FH3/FHCL3/HCHOLA3/LDLCQ1/</u> <u>NARC-1/NARC1/PC9 therapeutic antibody</u> | Ebronucimab | PCSK9 |
| GMP-Bios-ab-202 | <u>Pre-Made Evolocumab biosimilar, Whole mAb, Anti-PCSK9</u> <u>Antibody: Anti-FH3/FHCL3/HCHOLA3/LDLCQ1/</u> <u>NARC-1/NARC1/PC9 therapeutic antibody</u> | Evolocumab | PCSK9 |
| GMP-Bios-ab-224 | <u>Pre-Made Frovocimab biosimilar, Whole mAb, Anti-PCSK9</u> <u>Antibody: Anti-FH3/FHCL3/HCHOLA3/LDLCQ1/</u> <u>NARC-1/NARC1/PC9 therapeutic antibody</u> | Frovocimab | PCSK9 |
| GMP-Bios-ab-318 | <u>Pre-Made Lodelcizumab biosimilar, Whole mAb, Anti-PCSK9</u> <u>Antibody: Anti-FH3/FHCL3/HCHOLA3/LDLCQ1/</u> <u>NARC-1/NARC1/PC9 therapeutic antibody</u> | Lodelcizumab | PCSK9 |
| GMP-Bios-ab-403 | <u>Pre-Made Ongericimab biosimilar, Whole mAb, Anti-PCSK9</u> <u>Antibody: Anti-FH3/FHCL3/HCHOLA3/LDLCQ1/</u> <u>NARC-1/NARC1/PC9 therapeutic antibody</u> | Ongericimab | PCSK9 |
| GMP-Bios-ab-467 | <u>Pre-Made Ralpancizumab biosimilar, Whole mAb, Anti-PCSK9</u> <u>Antibody: Anti-FH3/FHCL3/HCHOLA3/LDLCQ1/</u> <u>NARC-1/NARC1/PC9 therapeutic antibody</u> | Ralpancizuma b | PCSK9 |

PCSK9

| Cat No. | Products Name (INN Index) | INN Name | Target |
|------------------|---|--------------|--------|
| GMP-Bios-ab-473 | <u>Pre-Made Recaticimab biosimilar, Whole mAb, Anti-PCSK9 Antibody: Anti-FH3/FHCL3/HCHOLA3/LDLCQ1/NARC-1/NARC1/PC9 therapeutic antibody</u> | Recaticimab | PCSK9 |
| GMP-Bios-ab-544 | <u>Pre-Made Tafolecimab biosimilar, Whole mAb, Anti-PCSK9 Antibody: Anti-FH3/FHCL3/HCHOLA3/LDLCQ1/NARC-1/NARC1/PC9 therapeutic antibody</u> | Tafolecimab | PCSK9 |
| GMP-Bios-INN-890 | <u>Pre-Made Lerodalcibep Biosimilar, Fusion Protein targeting PCSK9 fused with ALB (albumin, human serum albumin, HSA): Recombinant therapeutic protein targeting FH3/FHCL3/HCHOLA3/LDLCQ1/NARC-1/NARC1/PC9</u> | Lerodalcibep | PCSK9 |

VEGFA

| Cat No. | Products Name (INN Index) | INN Name | Target |
|-----------------|--|---------------|---------------|
| GMP-Bios-ab-065 | Pre-Made Bevacizumab biosimilar, Whole mAb, Anti-VEGFA Antibody: Anti-VPF/VEGF/MVCD1 therapeutic antibody | Bevacizumab | VEGFA |
| GMP-Bios-ab-083 | Pre-Made Brolocizumab biosimilar, scFv, Anti-VEGFA Antibody: Anti-VPF/VEGF/MVCD1 therapeutic antibody | Brolocizumab | VEGFA |
| GMP-Bios-ab-145 | Pre-Made Dilpacimab biosimilar, Bispecific mAb, Anti-DLL4; VEGFA Antibody: Anti-AOS6/delta4/hdelta2;VPF/VEGF/ MVCD1 therapeutic antibody | Dilpacimab | DLL4; VEGFA |
| GMP-Bios-ab-204 | Pre-Made Faricimab biosimilar, Bispecific mAb, Anti-VEGFA; ANGPT2 Antibody: Anti-VPF/VEGF/MVCD1;ANGPT2/ANG2/ LMPHM10 therapeutic antibody | Faricimab | VEGFA; ANGPT2 |
| GMP-Bios-ab-369 | Pre-Made Navicixizumab biosimilar, Bispecific mAb, Anti-DLL4; VEGFA Antibody: Anti-AOS6/delta4/hdelta2; VPF/VEGF/ MVCD1 therapeutic antibody | Navicixizumab | DLL4; VEGFA |
| GMP-Bios-ab-470 | Pre-Made Ranibizumab biosimilar, Fab, Anti-VEGFA Antibody: Anti-VPF/VEGF/MVCD1 therapeutic antibody | Ranibizumab | VEGFA |
| GMP-Bios-ab-612 | Pre-Made Vanucizumab biosimilar, Bispecific mAb, Anti-ANGPT2;VEGFA Antibody: Anti-AGPT2/ANG2/LMPHM10; VPF/VEGF/MVCD1 therapeutic antibody | Vanucizumab | ANGPT2 ;VEGFA |
| GMP-Bios-ab-613 | Pre-Made Varisacumab biosimilar, Whole mAb, Anti-VEGFA Antibody: Anti-VPF/VEGF/MVCD1 therapeutic antibody | Varisacumab | VEGFA |
| GMP-Bios-ab-674 | Pre-Made Ivonescimab biosimilar, Whole mAb, Anti-VEGFA Antibody: Anti-VPF/VEGF/MVCD1 therapeutic antibody | Ivonescimab | VEGFA |
| GMP-Bios-ab-700 | Pre-Made Tarcolimab biosimilar, Whole mAb, Anti-VEGFA Antibody: Anti-VPF/VEGF/MVCD1 therapeutic antibody | Tarcolimab | VEGFA |

VEGFA

| Cat No. | Products Name (INN Index) | INN Name | Target |
|-------------------|---|------------------|--------------------|
| GMP-Bios-INN-722 | <u>Pre-Made Aflibercept Biosimilar, Fusion Protein targeting VEGFA fused with human IGHG1 Fc (Fragment constant): Recombinant therapeutic protein targeting MVCD1/VEGF/VPF</u> | Aflibercept | VEGFA |
| GMP-Bios-INN-757 | <u>Pre-Made Bevacizumab Beta Biosimilar, Whole Mab, Anti-Vegfa Antibody: Anti-MVCD1/VEGF/VPF therapeutic antibody</u> | Bevacizumab Beta | VEGFA |
| GMP-Bios-INN-787 | <u>Pre-Made Conbercept Biosimilar, Fusion Protein targeting VEGFA fused with human IGHG1 Fc (Fragment constant): Recombinant therapeutic protein targeting MVCD1/VEGF/VPF</u> | Conbercept | VEGFA |
| GMP-Bios-INN-813 | <u>Pre-Made Efdamrofusp Alfa P Alfaiosimilar, Bispecific, Anti-C3/CO3;C4B;VEGFA Antibody: Anti-AHUS5/ARMD9/ASP/CPAMD1/HEL-S-62p;CH/C4F/CO4/C4BD/C4B12/CPAMD3;VPF/MVCD1 therapeutic antibody</u> | Efdamrofusp Alfa | C3/CO3; C4B; VEGFA |
| GMP-Bios-INN-1009 | <u>Pre-Made Tarcocimab Biosimilar, Whole Mab, Anti-Vegfa Antibody: Anti-MVCD1/VEGF/VPF therapeutic antibody</u> | Tarcocimab | VEGFA |



IL17A/IL17

| Cat No. | Products Name (INN Index) | INN Name | Target |
|-----------------|--|--------------|-------------------------|
| GMP-Bios-ab-012 | Pre-Made Afasevikumab biosimilar, Whole mAb, Anti-IL17A/IL17 Antibody: Anti-CTLA-8/CTLA8A/ILA17 therapeutic antibody | Afasevikumab | IL17A/IL17 |
| GMP-Bios-ab-070 | Pre-Made Bimekizumab biosimilar, Whole mAb, Anti-IL17A/IL17 Antibody: Anti-CTLA-8/CTLA8A/ILA17 therapeutic antibody | Bimekizumab | IL17A/IL17 |
| GMP-Bios-ab-286 | Pre-Made Ixekizumab biosimilar, Whole mAb, Anti-IL17A/IL17 Antibody: Anti-CTLA-8/CTLA8A/ILA17 therapeutic antibody | Ixekizumab | IL17A/IL17 |
| GMP-Bios-ab-374 | Pre-Made Netakimab biosimilar, Whole mAb, Anti-IL17A/IL17 Antibody: Anti-CTLA-8/CTLA8A/ILA17 therapeutic antibody | Netakimab | IL17A/IL17 |
| GMP-Bios-ab-438 | Pre-Made Perakizumab biosimilar, Whole mAb, Anti-IL17A/IL17 Antibody: Anti-CTLA-8/CTLA8A/ILA17 therapeutic antibody | Perakizumab | IL17A/IL17 |
| GMP-Bios-ab-478 | Pre-Made Remtolumab biosimilar, Bispecific Dual Variable Domain IG: Anti-IL17A/IL17;TNFA/TNF therapeutic antibody | Remtolumab | IL17A/IL17; TNFA/TNF |
| GMP-Bios-ab-510 | Pre-Made Secukinumab biosimilar, Whole mAb, Anti-IL17A/IL17 Antibody: Anti-CTLA-8/CTLA8A/ILA17 therapeutic antibody | Secukinumab | IL17A/IL17 |
| GMP-Bios-ab-568 | Pre-Made Tibulizumab biosimilar, Bispecific Mixed mAb and scFv, Anti-TNFSF13B;IL17A/IL17 Antibody: Anti-BAFF/BLYS/CD257/DTL/TALL-1/TALL1/THANK/TNFSF20/TNLG7A/ZTNF4;CTLA-8/CTLA8A therapeutic antibody | Tibulizumab | TNFSF13B; IL17A/IL17 |
| GMP-Bios-ab-633 | Pre-Made Vunakizumab biosimilar, Whole mAb, Anti-IL17A/IL17 Antibody: Anti-CTLA-8/CTLA8A/ILA17 therapeutic antibody | Vunakizumab | IL17A/IL17 |

IL17A/IL17

| Cat No. | Products Name (INN Index) | INN Name | Target |
|------------------|--|-------------|------------------------------|
| GMP-Bios-ab-671 | <u>Pre-Made Gumokimab biosimilar, Whole mAb, Anti-IL17A/IL17 Antibody: Anti-CTLA-8/CTLA8A/ILA17 therapeutic antibody</u> | Gumokimab | IL17A/IL17 |
| GMP-Bios-ab-710 | <u>Pre-Made Xeligekimab biosimilar, Whole mAb, Anti-IL17A/IL17 Antibody: Anti-CTLA-8/CTLA8A/ILA17 therapeutic antibody</u> | Xeligekimab | IL17A/IL17 |
| GMP-Bios-INN-880 | <u>Pre-Made Izokibep Biosimilar, Bispecific, Anti-ALB; IL17A/IL17 Antibody: Anti-FDAHT/HSA/PRO0883/PRO0903/PRO1341;CTLA-8/CTLA8A therapeutic antibody</u> | Izokibep | ALB; IL17A/IL17 |
| GMP-Bios-INN-996 | <u>Pre-Made Sonelokimab Biosimilar, Bispecific, Anti-ALB; IL17A/IL17;IL17F Antibody: Anti-FDAHT/HSA/PRO0883/PRO0903/PRO1341;CTLA-8/CTLA8/IL-17A/ILA17;CANDF6/ML-1/ML1 therapeutic antibody</u> | Sonelokimab | ALB; IL17A/IL17; IL17F |

CTLA4/CTLA-4

| Cat No. | Products Name (INN Index) | INN Name | Target |
|-----------------|--|--------------|----------------------------------|
| GMP-Bios-ab-078 | Pre-Made Botensilimab biosimilar, Whole mAb, Anti-CTLA4/CTLA-4 Antibody: Anti-CD/GSE/GRD4/ALPS5/CD152/IDDM12/CELIAC3 therapeutic antibody | Botensilimab | CTLA4/ CTLA-4 |
| GMP-Bios-ab-088 | Pre-Made Cadonilimab biosimilar, Bispecific Mixed mAb and scFv, Anti-PDCD1/PD-1;CTLA4/CTLA-4 antibody: Anti-CD279/PD1/SLEB2/hPD-1/hPD-l/hSLE1;CD/GSE/GRD4/ALPS5/CD152/IDDM12/CELIAC3 therapeutic antibody | Cadonilimab | PDCD1/PD-1; CTLA4/ CTLA-4 |
| GMP-Bios-ab-194 | Pre-Made Erfonrilimab biosimilar, Bispecific Single Domains (VH-VH'-CH), Anti-CD274/PD-L1;CTLA4/CTLA-4 Antibody: Anti-B7-H/B7H1/PDCD1L1/PDCD1LG1;CD/GSE/GRD4/ALPS5/CD152/IDDM12/CELIAC3 therapeutic antibody | Erfonrilimab | CD274/PD-L1 ;CTLA4/ CTLA-4 |
| GMP-Bios-ab-277 | Pre-Made Ipilimumab biosimilar, Whole mAb, Anti-CTLA4/CTLA-4 Antibody: Anti-CD/GSE/GRD4/ALPS5/CD152/IDDM12/CELIAC3 therapeutic antibody | Ipilimumab | CTLA4/ CTLA-4 |
| GMP-Bios-ab-382 | Pre-Made Nurulimab biosimilar, Whole mAb, Anti-CTLA4/CTLA-4 Antibody: Anti-CD/GSE/GRD4/ALPS5/CD152/IDDM12/CELIAC3 therapeutic antibody | Nurulimab | CTLA4/ CTLA-4 |
| GMP-Bios-ab-432 | Pre-Made Pavunalimab biosimilar, Bispecific Mixed mAb and scFv, Anti-LAG3;CTLA4/CTLA-4 Antibody: Anti-CD223;CD/GSE/GRD4/ALPS5/CD152/IDDM12/CELIAC3 therapeutic antibody | Pavunalimab | LAG3;CTLA4/ CTLA-4 |
| GMP-Bios-ab-460 | Pre-Made Quavonlimab biosimilar, Whole mAb, Anti-CTLA4/CTLA-4 Antibody: Anti-CD/GSE/GRD4/ALPS5/CD152/IDDM12/CELIAC3 therapeutic antibody | Quavonlimab | CTLA4/ CTLA-4 |
| GMP-Bios-ab-569 | Pre-Made Ticilimumab biosimilar, Whole mAb, Anti-CTLA4/CTLA-4 Antibody: Anti-CD/GSE/GRD4/ALPS5/CD152/IDDM12/CELIAC3 therapeutic antibody | Ticilimumab | CTLA4/ CTLA-4 |

CTLA4/CTLA-4

| Cat No. | Products Name (INN Index) | INN Name | Target |
|-----------------|---|--------------|---------------------------------|
| GMP-Bios-ab-595 | Pre-Made Tremelimumab biosimilar, Whole mAb, Anti-CTLA4/CTLA-4 Antibody: Anti-CD/GSE/GRD4/ALPS5/CD152/IDDM12/CELIAC3 therapeutic antibody | Tremelimumab | CTLA4/ CTLA-4 |
| GMP-Bios-ab-631 | Pre-Made Vudalimab biosimilar, Bispecific Mixed mAb and scFv, Anti-CTLA4/CTLA-4;PDCD1/PD-1 Antibody: Anti-CD/GSE/GRD4/ALPS5/CD152/IDDM12/CELIAC3;CD279/SLEB2/hPD-1/hPD-1/hSLE1 therapeutic antibody | Vudalimab | CTLA4/ CTLA-4; PDCD1/PD-1 |
| GMP-Bios-ab-636 | Pre-Made Zalifrelimab biosimilar, Whole mAb, Anti-CTLA4/CTLA-4 Antibody: Anti-CD/GSE/GRD4/ALPS5/CD152/IDDM12/CELIAC3 therapeutic antibody | Zalifrelimab | CTLA4/ CTLA-4 |
| GMP-Bios-ab-679 | Pre-Made Lorigerlimab biosimilar, Whole mAb, Anti-PDCD1/PD-1;CTLA4/CTLA-4 Antibody: Anti-CD279/PD1/SLEB2/hPD-1/hPD-1/hSLE1;CD/GSE/GRD4/ALPS5/CD152/IDDM12/CELIAC3 therapeutic antibody | Lorigerlimab | PDCD1/PD-1; CTLA4/ CTLA-4 |
| GMP-Bios-ab-704 | Pre-Made Tuvonralimab biosimilar, Whole mAb, Anti-CTLA4/CTLA-4 Antibody: Anti-CD/GSE/GRD4/ALPS5/CD152/IDDM12/CELIAC3 therapeutic antibody | Tuvonralimab | CTLA4/ CTLA-4 |

CD22

| Cat No. | Products Name (INN Index) | INN Name | Target |
|------------------|--|--------------------------|--------|
| GMP-Bios-ab-190 | Pre-Made Epratuzumab biosimilar, Whole mAb, Anti-CD22 Antibody: Anti-SIGLEC2/SIGLEC-2 therapeutic antibody | Epratuzumab | CD22 |
| GMP-Bios-ab-275 | Pre-Made Inotuzumab biosimilar, Whole mAb ADC, Anti-CD22 Antibody: Anti-SIGLEC2/SIGLEC-2 therapeutic antibody | Inotuzumab | CD22 |
| GMP-Bios-ab-358 | Pre-Made Moxetumomab biosimilar, Fv Fusion, Anti-CD22 Antibody: Anti-SIGLEC2/SIGLEC-2 therapeutic antibody | Moxetumomab | CD22 |
| GMP-Bios-ab-444 | Pre-Made Pinatuzumab biosimilar, Whole mAb ADC, Anti-CD22 Antibody: Anti-SIGLEC2/SIGLEC-2 therapeutic antibody | Pinatuzumab | CD22 |
| GMP-Bios-ab-697 | Pre-Made Suciraslimab biosimilar, Whole mAb, Anti-CD22 Antibody: Anti-SIGLEC2/SIGLEC-2 therapeutic antibody | Suciraslimab | CD22 |
| GMP-Bios-INN-751 | Pre-Made Bectumomab Biosimilar, Fab Fusion, Anti-Cd22 Antibody: Anti-SIGLEC-2/SIGLEC2 therapeutic antibody | Bectumomab | CD22 |
| GMP-Bios-INN-868 | Pre-Made Inotuzumab Ozogamicin Biosimilar, Whole Mab Adc, Anti-Cd22 Antibody: Anti-SIGLEC-2/SIGLEC2 therapeutic antibody Drug Conjugate | Inotuzumab Ozogamicin | CD22 |
| GMP-Bios-INN-920 | Pre-Made Moxetumomab Pasudotox biosimilar, Fusion Protein, Moxetumomab-Anti-CD22 Antibody: Anti-SIGLEC-2/SIGLEC2 therapeutic antibody fused with Pseudomonas aeruginosa exotoxin A | Moxetumomab Pasudotox | CD22 |
| GMP-Bios-INN-960 | Pre-Made Pinatuzumab Vedotin Biosimilar, Whole Mab Adc, Anti-Cd22 Antibody: Anti-SIGLEC-2/SIGLEC2 therapeutic antibody Drug Conjugate | Pinatuzumab Vedotin | CD22 |

APP

| Cat No. | Products Name (INN Index) | INN Name | Target |
|-----------------|---|--------------|--------|
| GMP-Bios-ab-011 | <u>Pre-Made Aducanumab biosimilar, Whole mAb, Anti-APP Antibody: Anti-AAA/AD1/PN2/ABPP/CVAP/ABETA/PN-II/preA4/CTFgamma therapeutic antibody</u> | Aducanumab | APP |
| GMP-Bios-ab-046 | <u>Pre-Made Bapineuzumab biosimilar, Whole mAb, Anti-APP Antibody: Anti-AAA/AD1/PN2/ABPP/CVAP/ABETA/PN-II/preA4/CTFgamma therapeutic antibody</u> | Bapineuzumab | APP |
| GMP-Bios-ab-122 | <u>Pre-Made Crenezumab biosimilar, Whole mAb, Anti-APP Antibody: Anti-AAA/AD1/PN2/ABPP/CVAP/ABETA/PN-II/preA4/CTFgamma therapeutic antibody</u> | Crenezumab | APP |
| GMP-Bios-ab-153 | <u>Pre-Made Donanemab biosimilar, Whole mAb, Anti-APP Antibody: Anti-AAA/AD1/PN2/ABPP/CVAP/ABETA/PN-II/preA4/CTFgamma therapeutic antibody</u> | Donanemab | APP |
| GMP-Bios-ab-232 | <u>Pre-Made Gantenerumab biosimilar, Whole mAb, Anti-APP Antibody: Anti-AAA/AD1/PN2/ABPP/CVAP/ABETA/PN-II/preA4/CTFgamma therapeutic antibody</u> | Gantenerumab | APP |
| GMP-Bios-ab-300 | <u>Pre-Made Lecanemab biosimilar, Whole mAb, Anti-APP Antibody: Anti-AAA/AD1/PN2/ABPP/CVAP/ABETA/PN-II/preA4/CTFgamma therapeutic antibody</u> | Lecanemab | APP |
| GMP-Bios-ab-450 | <u>Pre-Made Ponezumab biosimilar, Whole mAb, Anti-APP Antibody: Anti-AAA/AD1/PN2/ABPP/CVAP/ABETA/PN-II/preA4/CTFgamma therapeutic antibody</u> | Ponezumab | APP |
| GMP-Bios-ab-527 | <u>Pre-Made Solanezumab biosimilar, Whole mAb, Anti-APP Antibody: Anti-AAA/AD1/PN2/ABPP/CVAP/ABETA/PN-II/preA4/CTFgamma therapeutic antibody</u> | Solanezumab | APP |



C5/C05

| Cat No. | Products Name (INN Index) | INN Name | Target |
|------------------|--|---------------|--------|
| GMP-Bios-ab-125 | Pre-Made Crovalimab biosimilar, Whole mAb, Anti-C5/C05 Antibody: Anti-CPAMD4/ECLZB therapeutic antibody | Crovalimab | C5/C05 |
| GMP-Bios-ab-164 | Pre-Made Eculizumab biosimilar, Whole mAb, Anti-C5/C05 Antibody: Anti-CPAMD4/ECLZB therapeutic antibody | Eculizumab | C5/C05 |
| GMP-Bios-ab-395 | Pre-Made Olendalizumab biosimilar, Whole mAb, Anti-C5/C05 Antibody: Anti-CPAMD4/ECLZB therapeutic antibody | Olendalizumab | C5/C05 |
| GMP-Bios-ab-472 | Pre-Made Ravulizumab biosimilar, Whole mAb, Anti-C5/C05 Antibody: Anti-CPAMD4/ECLZB therapeutic antibody | Ravulizumab | C5/C05 |
| GMP-Bios-ab-565 | Pre-Made Tesidolumab biosimilar, Whole mAb, Anti-C5/C05 Antibody: Anti-CPAMD4/ECLZB therapeutic antibody | Tesidolumab | C5/C05 |
| GMP-Bios-ab-621 | Pre-Made Vilobelimab biosimilar, Whole mAb, Anti-C5/C05 Antibody: Anti-CPAMD4/ECLZB therapeutic antibody | Vilobelimab | C5/C05 |
| GMP-Bios-INN-959 | Pre-Made Pexelizumab Biosimilar, Scfv, Anti-C5/C05 Antibody: Anti-CPAMD4/ECLZB therapeutic antibody | Pexelizumab | C5/C05 |
| GMP-Bios-INN-963 | Pre-Made Pozelimab Biosimilar, Whole Mab, Anti-C5/C05 Antibody: Anti-CPAMD4/ECLZB therapeutic antibody | Pozelimab | C5/C05 |

CEACAM5/CD66e

| Cat No. | Products Name (INN Index) | INN Name | Target |
|-------------------|---|--------------------------|----------------|
| GMP-Bios-ab-099 | Pre-Made Cergutuzumab biosimilar, Whole mAb Fusion, Anti-CEACAM5/CD66e Antibody: Anti-CEA therapeutic antibody | Cergutuzumab | CEACAM5 /CD66e |
| GMP-Bios-ab-288 | Pre-Made Labetuzumab biosimilar, Whole mAb ADC, Anti-CEACAM5/CD66e Antibody: Anti-CEA therapeutic antibody | Labetuzumab | CEACAM5 /CD66e |
| GMP-Bios-ab-597 | Pre-Made Tusamitamab biosimilar, Whole mAb, Anti-CEACAM5/CD66e Antibody: Anti-CEA therapeutic antibody | Tusamitamab | CEACAM5 /CD66e |
| GMP-Bios-INN-730 | Pre-Made Altumomab Biosimilar, Radiolabelled Antibody, Anti-CEACAM5/CD66e Antibody: Anti-CEA therapeutic antibody | Altumomab | CEACAM5 /CD66e |
| GMP-Bios-INN-738 | Pre-Made Arcitumomab Biosimilar, Radiolabelled Antibody, Anti-CEACAM5/CD66e Antibody: Anti-CEA therapeutic antibody | Arcitumomab | CEACAM5 /CD66e |
| GMP-Bios-INN-775 | Pre-Made Cergutuzumab Amunaleukin biosimilar, Fusion Protein, Cergutuzumab-Anti-CEACAM5/CD66e Antibody: Anti-CEA therapeutic antibody fused with human IL2 (interleukin 2, IL-2) Pr21-153 | Cergutuzumab Amunaleukin | CEACAM5 /CD66e |
| GMP-Bios-INN-882 | Pre-Made Labetuzumab Govitecan Biosimilar, Whole Mab Adc, Anti-CEACAM5/CD66e Antibody: Anti-CEA therapeutic antibody Drug Conjugate | Labetuzumab Govitecan | CEACAM5 /CD66e |
| GMP-Bios-INN-1037 | Pre-Made Tusamitamab Ravtansine Biosimilar, Whole Mab Adc, Anti-CEACAM5/CD66e Antibody: Anti-CEA therapeutic antibody Drug Conjugate | Tusamitamab Ravtansine | CEACAM5 /CD66e |

IGF1R

| Cat No. | Products Name (INN Index) | INN Name | Target |
|------------------|---|----------------------|----------------------------|
| GMP-Bios-ab-108 | <u>Pre-Made Cixutumumab biosimilar, Whole mAb, Anti-IGF1R Antibody: Anti-IGFR/CD221/IGFIR/JTK13 therapeutic antibody</u> | Cixutumumab | IGF1R |
| GMP-Bios-ab-131 | <u>Pre-Made Dalotuzumab biosimilar, Whole mAb, Anti-IGF1R Antibody: Anti-IGFR/CD221/IGFIR/JTK13 therapeutic antibody</u> | Dalotuzumab | IGF1R |
| GMP-Bios-ab-213 | <u>Pre-Made Figitumumab biosimilar, Whole mAb, Anti-IGF1R Antibody: Anti-IGFR/CD221/IGFIR/JTK13 therapeutic antibody</u> | Figitumumab | IGF1R |
| GMP-Bios-ab-231 | <u>Pre-Made Ganitumab biosimilar, Whole mAb, Anti-IGF1R Antibody: Anti-IGFR/CD221/IGFIR/JTK13 therapeutic antibody</u> | Ganitumab | IGF1R |
| GMP-Bios-ab-282 | <u>Pre-Made Istiratumab biosimilar, Bispecific Mixed mAb and scFv, Anti-IGF1R;ERBB3/ErbB-3 Antibody: Anti-IGFR/CD221/IGFIR/JTK13;FERLK/HER3/LCCS2/MDA-BF-1/VSCN 1/c-c-erbB3/p180-ErbB3/p45-sErbB3/p85-sErbB3 therapeutic antibody</u> | Istiratumab | IGF1R; ERBB3/ ErbB-3 |
| GMP-Bios-ab-321 | <u>Pre-Made Lonigutamab biosimilar, Whole mAb, Anti-IGF1R Antibody: Anti-IGFR/CD221/IGFIR/JTK13 therapeutic antibody</u> | Lonigutamab | IGF1R |
| GMP-Bios-ab-489 | <u>Pre-Made Robatumumab biosimilar, Whole mAb, Anti-IGF1R Antibody: Anti-IGFR/CD221/IGFIR/JTK13 therapeutic antibody</u> | Robatumumab | IGF1R |
| GMP-Bios-ab-564 | <u>Pre-Made Teprotumumab biosimilar, Whole mAb, Anti-IGF1R Antibody: Anti-IGFR/CD221/IGFIR/JTK13 therapeutic antibody</u> | Teprotumumab | IGF1R |
| GMP-Bios-INN-897 | <u>Pre-Made Lonigutamab Ugodotin Biosimilar, Whole Mab Adc, Anti-Igf1R Antibody: Anti-CD221/IGFIR/IGFR/JTK13 therapeutic antibody Drug Conjugate</u> | Lonigutamab Ugodotin | IGF1R |

IL2RA

| Cat No. | Products Name (INN Index) | INN Name | Target |
|------------------|--|-----------------------|--------|
| GMP-Bios-ab-049 | Pre-Made Basiliximab biosimilar, Whole mAb, Anti-IL2RA Antibody: Anti-CD25/IDDM10/IL2R/IMD41/TCGFR/p55 therapeutic antibody | Basiliximab | IL2RA |
| GMP-Bios-ab-089 | Pre-Made Camidanlumab biosimilar, Whole mAb ADC, Anti-IL2RA Antibody: Anti-CD25/IDDM10/IL2R/IMD41/TCGFR/p55 therapeutic antibody | Camidanlumab | IL2RA |
| GMP-Bios-ab-129 | Pre-Made Daclizumab biosimilar, Whole mAb, Anti-IL2RA Antibody: Anti-CD25/IDDM10/IL2R/IMD41/TCGFR/p55 therapeutic antibody | Daclizumab | IL2RA |
| GMP-Bios-INN-768 | Pre-Made Camidanlumab Tesirine Biosimilar, Whole Mab Adc, Anti-IL2Ra Antibody: Anti-CD25/IDDM10/IL2R/IMD41/TCGFR/p55 therapeutic antibody Drug Conjugate | Camidanlumab Tesirine | IL2RA |
| GMP-Bios-INN-789 | Pre-Made Daclizumab Beta Biosimilar, Whole Mab, Anti-IL2Ra Antibody: Anti-CD25/IDDM10/IL2R/IMD41/TCGFR/p55 therapeutic antibody | Daclizumab Beta | IL2RA |
| GMP-Bios-INN-867 | Pre-Made Inolimomab Biosimilar, Whole Mab, Anti-IL2Ra Antibody: Anti-CD25/IDDM10/IL2R/IMD41/TCGFR/p55 therapeutic antibody | Inolimomab | IL2RA |
| GMP-Bios-INN-907 | Pre-Made Melredableukin Alfa Biosimilar, Fusion Protein targeting IL2RA fused with human IL2 (interleukin 2, IL-2) via a peptidyl linker: Recombinant therapeutic protein targeting CD25/IDDM10/IL2R/IMD41/TCGFR/p55 | Melredableukin Alfa | IL2RA |
| GMP-Bios-INN-926 | Pre-Made Nemvaleukin Alfa Biosimilar, Fusion Protein targeting IL2RA fused with human IL2RA (interleukin 2 receptor alpha subunit, IL-2RA, TAC, p55, CD25) 139-303 (1-165): Recombinant therapeutic protein targeting CD25/IDDM10/IL2R/IMD41/TCGFR/p55 | Nemvaleukin Alfa | IL2RA |

| Cat No. | Products Name (INN Index) | INN Name | Target |
|------------------|--|---------------------|----------------|
| GMP-Bios-ab-107 | <u>Pre-Made Citatuzumab biosimilar, Fab Fusion, Anti-EPCAM Antibody: Anti-Ber-Ep4/BerEp4/DIAR5/EGP-2/EGP314/EGP40/ESA/HNPCC8/KS1/4/KSA/M4S1/MIC18/MK-1/MOC-31/TACSTD1/TROP1 therapeutic antibody</u> | Citatuzumab | EPCAM |
| GMP-Bios-ab-165 | <u>Pre-Made Edrecolomab biosimilar, Whole mAb, Anti-EPCAM Antibody: Anti-Ber-Ep4/BerEp4/DIAR5/EGP-2/EGP314/EGP40/ESA/HNPCC8/KS1/4/KSA/M4S1/MIC18/MK-1/MOC-31/TACSTD1/TROP1 therapeutic antibody</u> | Edrecolomab | EPCAM |
| GMP-Bios-ab-408 | <u>Pre-Made Oportuzumab biosimilar, scFv, Anti-EPCAM Antibody: Anti-Ber-Ep4/BerEp4/DIAR5/EGP-2/EGP314/EGP40/ESA/HNPCC8/KS1/4/KSA/M4S1/MIC18/MK-1/MOC-31/TACSTD1/TROP1 therapeutic antibody</u> | Oportuzumab | EPCAM |
| GMP-Bios-ab-528 | <u>Pre-Made Solitomab biosimilar, Bispecific scFv, Anti-EPCAM; CD3E Antibody: Anti-Ber-Ep4/BerEp4/DIAR5/EGP-2/EGP314/EGP40/ESA/HNPCC8/KS1/4/KSA/M4S1/MIC18/MK-1/MOC-31/TACSTD1/TROP1;T3E/TCRE/IMD18 therapeutic antibody</u> | Solitomab | EPCAM; CD3E |
| GMP-Bios-INN-719 | <u>Pre-Made Adecatumumab Biosimilar, Whole Mab, Anti-Epcam Antibody: Anti-Ber-Ep4/BerEp4/DIAR5/EGP-2/EGP314/EGP40/ESA/HNPCC8/KS1/4/KSA/M4S1/MIC18/MK-1/MOC-31/TACSTD1/TROP1 therapeutic antibody</u> | Adecatumumab | EPCAM |
| GMP-Bios-INN-772 | <u>Pre-Made Catumaxomab Biosimilar, Bispecific, Anti-Cd3E; Epcam Antibody: Anti-T3E/TCRE/IMD18/CD3epsilon; Ber-Ep4/BerEp4/DIAR5/EGP-2/EGP314/EGP40/ESA/HNPCC8/KS1/4/KSA/M4S1/MIC18/MK-1/MOC-31/TACSTD1/TROP1 therapeutic antibody</u> | Catumaxomab | CD3E; EPCAM |
| GMP-Bios-INN-781 | <u>Pre-Made Citatuzumab Bogatox biosimilar, Fusion Protein. Citatuzumab-Anti-EPCAM Antibody: Anti-Ber-Ep4/BerEp4/DIAR5/EGP-2/EGP314/EGP40/ESA/HNPCC8/KS1/4/KSA/M4S1/MIC18/MK-1/MOC-31/TACSTD1/TROP1 therapeutic antibody fused with Bougainvillea spectabilis Willd bouganin</u> | Citatuzumab Bogatox | EPCAM |
| GMP-Bios-INN-939 | <u>Pre-Made Oportuzumab Monatox biosimilar, Fusion Protein. Oportuzumab-Anti-EPCAM Antibody: Anti-Ber-Ep4/BerEp4/DIAR5/EGP-2/EGP314/EGP40/ESA/HNPCC8/KS1/4/KSA/M4S1/MIC18/MK-1/MOC-31/TACSTD1/TROP1 therapeutic antibody fused with Pseudomonas aeruginosa exotoxin A</u> | Oportuzumab Monatox | EPCAM |

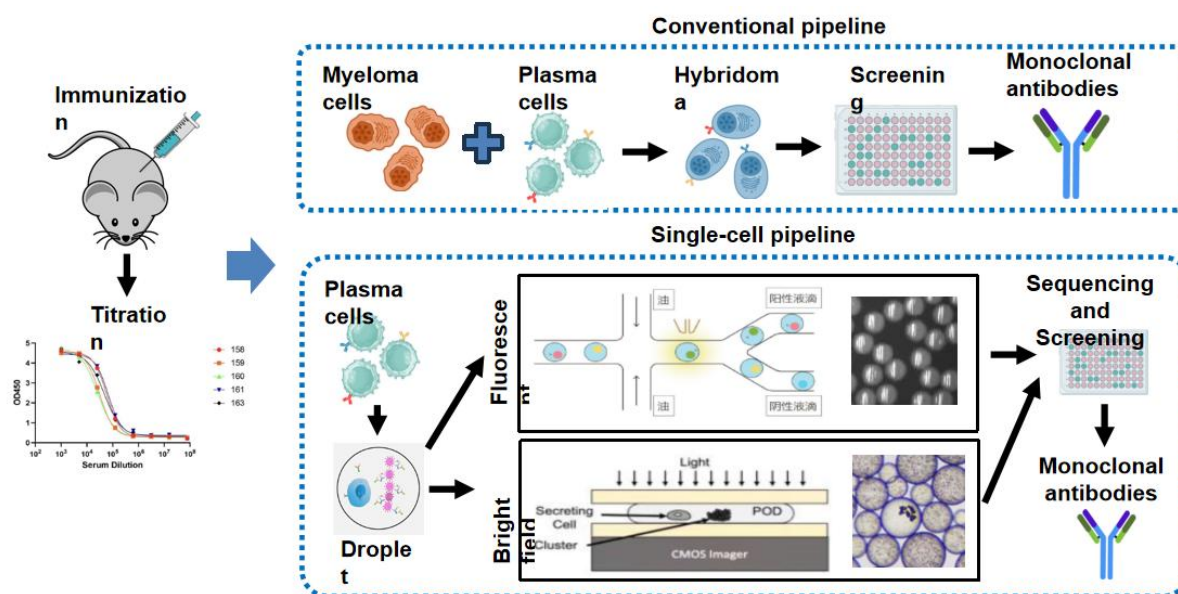
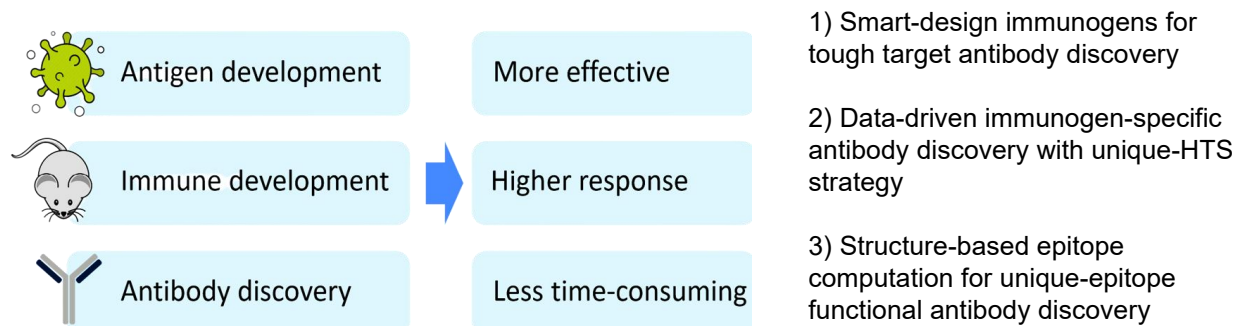
[For other targets, click here to check >>](#)

Part 2 Platform & Service

Taurus™-Antibody Discovery Platform

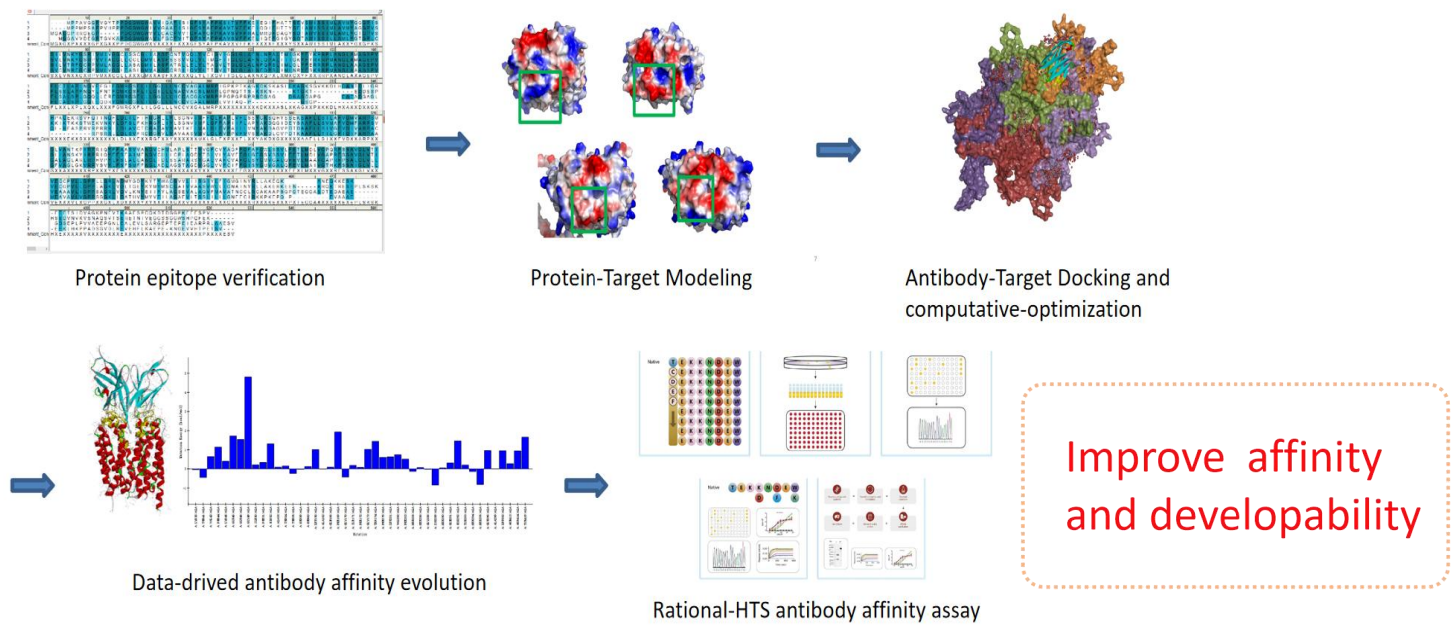
About Taurus™- Antibody Discovery Platform

Taurus™- Antibody Discovery Platform is to achieve Tough Antigen Unique-epitope Recognized with Unque Smart-immunogen strategy.



| Method | Advantages |
|--|---|
| Hybridoma | <ul style="list-style-type: none"> ● Classic method ● No need for special facilities |
| Fluorescence-based single cell screening | <ul style="list-style-type: none"> ● High speed ● High throughput ● 1 day for screening ● Multi-color method for higher hits rate |
| Bright field-based single cell screening | <ul style="list-style-type: none"> ● High speed ● High throughput ● 1 day for screening ● Thousands of cells can be sorted out |

LIBRA™-Antibody Rational-Engineering Platform



Visit the website to try our new free service:

<https://www.genemedi.com/bgmx-libra-optm-service>

Sequence and structure-based tool for therapeutic antibody post-translational modifications (PTM) sites analysis, prediction and de-risking

GeneMedi's LIBRA OPTM™ is a powerful optimization tool for antibody post-translational modifications (PTM) site de-risking. The LIBRA-OPTM™ combines sequence and structure-based in silico algorithm with antibody optimization for developing the therapeutic antibody based on post-translational modifications (PTM) site analysis, prediction and de-risking.

f t in

Knowledge base of antibody PTM

You must log in to proceed to the second step!

1. What is antibody post-translational modifications (PTM)
2. Antibody post-translational modifications (PTM) sites and the therapeutic antibody developability
3. How to de-risk the PTM site of your antibody? (The workflow)
4. LIBRA-OPTM™ Case validation

Fill in your antibody sequence for PTM derisk

(following the demo format) use the [Demo](#) [Clear](#)

Heavy chain

Paste the antibody heavy chain variable region sequence here

Light chain

Paste the antibody light chain variable region sequence here

[CHECK](#) * Click for antibody sequence format fast-autocheck

LIBRA

\$4999 **\$0** FREE

Step1: Register and login.

Step2: Check antibody sequence, for first-time user, please check the demo.

Step3: Fill in the Antibody name, email and submit the form.

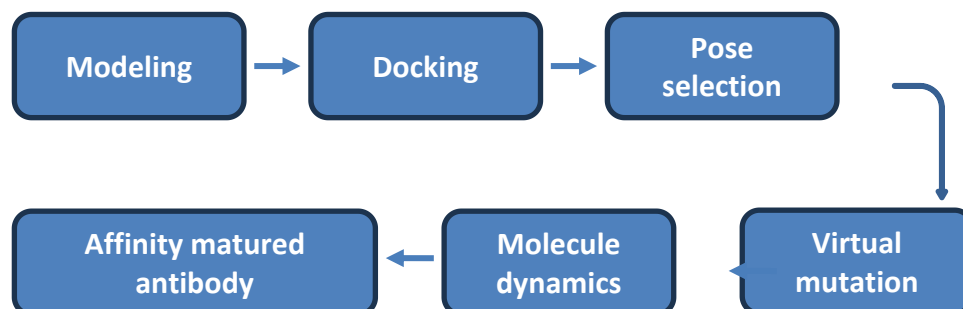
Step4: Download the report for free!

If you encounter some problems, please contact us by email.

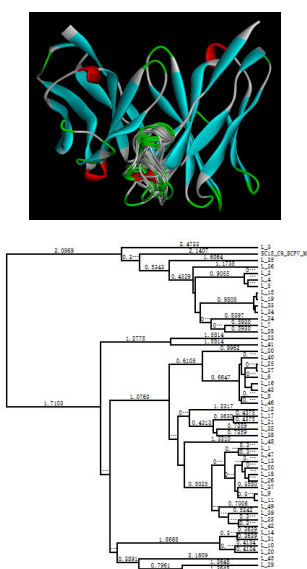
[Contact Us](#)

In-silico-based antibody affinity maturation

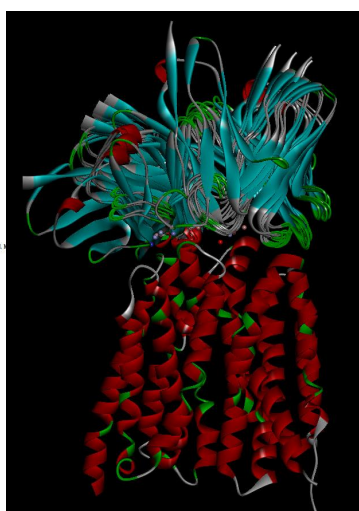
Pipeline



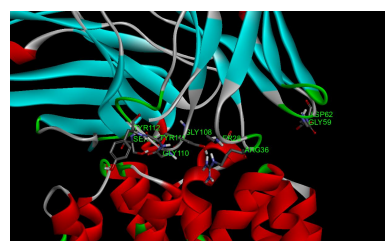
Modeling and CDR optimization



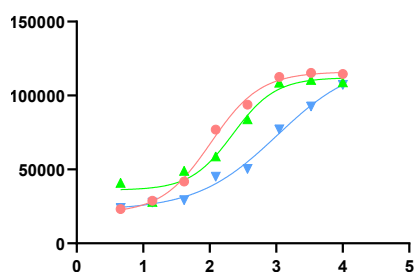
Docking and pose selection



Virtual mutation



Affinity matured antibody



- Matured ab-1
- ▲ Matured ab-2
- ▲ Parental ab

| Antibody | EC50 (ng/ml) |
|--------------|--------------|
| Parental | 1030 |
| Matured ab-1 | 104 |
| Matured ab-2 | 223 |

10 fold higher affinity